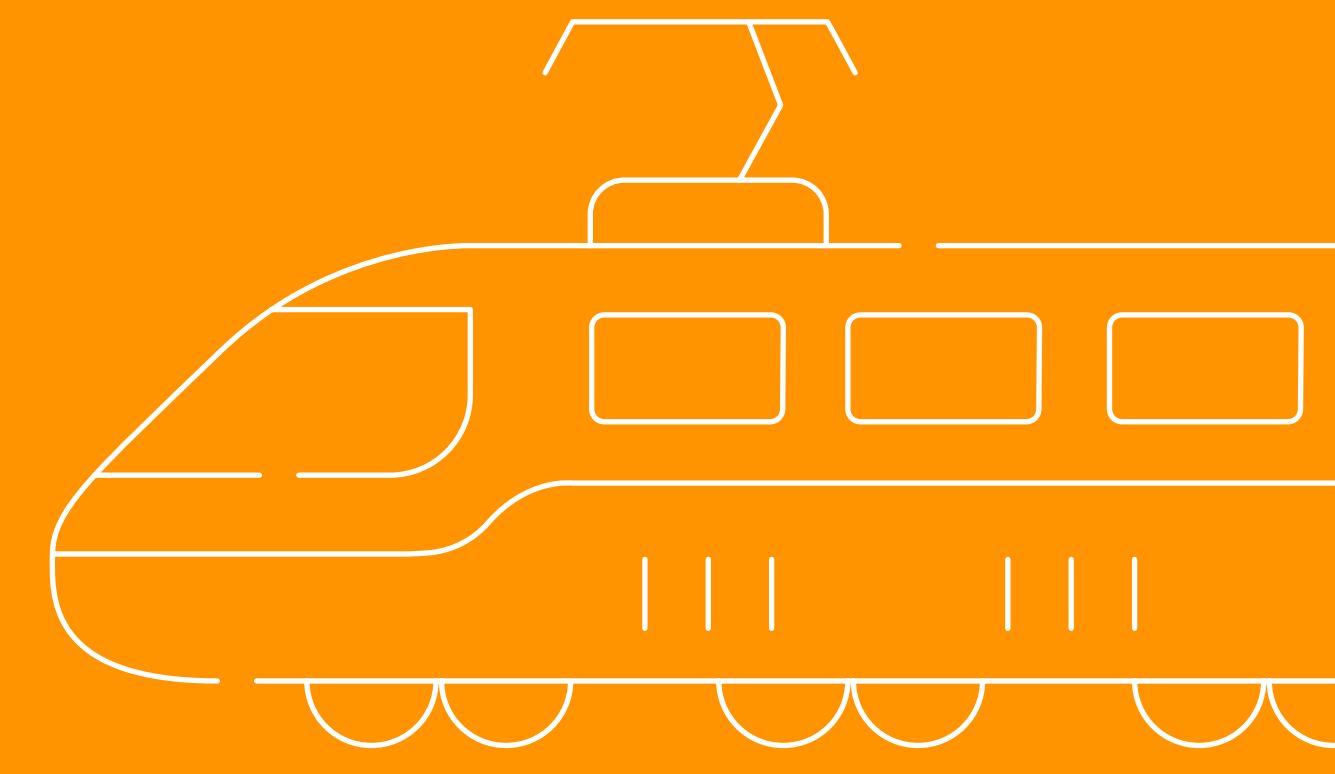


History at your fingertips:

Korean drama and K-pop
1-day itinerary

BEFORE YOU GO

Seoul has a diverse range of hotels, and we've compiled some for you and your companions. We made sure locations are near hot tourist destinations in Seoul.



Budget	Hotel
USD 60/night and below	Fairfield by Marriott Seoul, Nine Tree Premier Hotel Myeongdong II Holiday Inn Express Seoul Hongdae MAKERS HOTEL
USD 150/night and below	Solaria Nishitetsu Hotel Seoul, Lotte City Hotel Myeongdong, Novotel Ambassador Hotel, RYSE Autograph Collection
USD 300/night and below	InterContinental Grand Seoul Parnas, SIGNIEL SEOUL, The Westin Josun Seoul

Before you commence on your trip, pick these items up from the airport to make your trip all the more convenient.

Item	Location
4G Wifi Device	KT Roaming Center at the following locations
4G Sim Card	Incheon International Airport <ul style="list-style-type: none">• 1/F Gate 6-7, open 24 hours daily• Gate 4-5 (From 1 Mar 2018), Daily 7am to 10pm**• Gate 10-11, Daily 6am to 10pm Incheon Airport International Airport Terminal 2 <p>1st Floor Gate 2-3 KT Roaming Center, open 24 hours daily *Roaming, sim card, wifi router service only</p> Gimpo International Airport (Seoul) <p>1/F Gate 1, Daily 7am to 11pm**</p>
AREX Incheon Airport Express Train One Way Ticket in Seoul	Incheon International Airport Terminal 1 <p>Transportation Center of Incheon Int'l Airport (B1F floor) Information Center Opening hours: Daily, 5am to 10:40pm</p> Incheon International Airport Terminal 2 <p>Transportation Center of Incheon Int'l Airport (B1F floor) Information Center Opening hours: Dail, 5am to 10:40pm</p> <p>Alternatively, you can also exchange your tickets manually at the Express Train Ticket Vending Machine located at the Incheon Airport Station and Seoul Station</p>
Korea Rail Pass (KR PASS)	Incheon Airport Railroad Information Center <p>Opening hours: Daily, 7am to 9:30pm</p>

** Note: Temporarily closed due to Covid-19 restrictions, please check the operating hours before visiting.

OVERVIEW



Time	Activity	How To Get There
1030-1300	Make your first stop at <i>Gyeongbokgung Palace</i>	Subways Line 3, Gyeongbokgung Station, Exit 5
1330-1530	Head over to <i>Samcheongdong</i> for an artistic venture	5 minutes walk from the entrance of the National Folk eMuseum of Korea
1600-1730	Visit <i>Bukchon Hanok Village</i> where old meets new	Subway Line 3, Anguk Station, Exit 1 or 2
1800-1930	Admire the beauty of the <i>Changdeokgung Palace</i>	Subway Line 3, Anguk Station, Exit 3



©Discover Seoul Pass

Seoul is known for aesthetic dramas and music videos, given the directors' keen eye for beauty and high budgets. Oftentimes these sites are taken right in Seoul, allowing the audience to connect to the city's culture and history, and go beyond the screen. Wait no longer as we optimize your experience with a **24h Discover Seoul Pass**. We hope you find this itinerary useful in planning out your schedule, so be sure to drop by and recreate your own scenes!

START WITH THE CLASSIC GYEONGBOKGUNG PALACE



1030-1300: Start with the classic Gyeongbokgung Palace

The Discover Seoul Pass grants us free entry to our first stop, Gyeongbokgung Palace. It is a must-go especially among first-time visitors of Seoul, and a common sight for Kdrama fans. Wander the historic grounds and admire the main palace of the Joseon Dynasty, where the glorious days of Joseon's political, economic and cultural affairs took place. Although Japanese invasions have caused damage to the grounds, it has since been restored to its original image.

As you arrive at the palace from the south, you'll first set eyes on the grand Gwanghwamun Gate consisting of three arched gates set in giant stone walls. With luck you might catch the changing of the palace guards at designated times during the day.

Heading on to the main hall on the palace grounds, you'll find yourself in front of the Geunjeongjeon Hall where kings hosted ceremonies. Boasting impressive traditional architecture with wide pillars and intricate carvings of mystical creatures and stories. On the north side of the hall is the eojwa (king's throne) in front of a folding screen featuring the sun, moon and five peaks symbolizing the universe.

Pay a visit to the Gyeonghoeru Pavilion located by the pond, and feel the serenity wash through you. We can see why the pavilion was used



to entertain foreign visitors in the past, as the area is dubbed to have one of the most beautiful views. Its name also bears great significance, as it makes reference to a leader's success with the right people. On the other hand, the Hyangwonjeong Pavilion sits by a square-shaped pond named Hyangwonji hid snugly at the back-end as a humble yet graceful hexagonal structure.

With more to see at the Gyeongbokgung Palace, the National Palace Museum of Korea promotes and preserves the culture of the Joseon period by curating and exhibiting relics and artefacts. With both permanent and special exhibitions based on in-depth stories, it'll bring you on a learning journey through Korea's past.

Getting there:
Subways Line 3,
Gyeongbokgung Station,
Exit 5
Address:
161, Sajik-ro,
Jongno-gu, Seoul

BRING OUT YOUR ARTISTIC SIDE AT SAMCHEONGDONG

1330-1530:
Bring out your artistic side at Samcheongdong

Located near the palace, the area screams style and artistry. It comprises several neighbourhoods: Anguk-dong, Sogyeok-dong, Hwa-dong, and Sagan-dong and ends at Samcheong Park. Its name denoting “three purities” represent the hills, water and people of the area known for being fresh, simple and humble. It has since attracted artists and visitors to set base and studios in the surrounding places.

Samcheongdong has a bizarre yet charming combination of traditional Korean houses and trendy modern buildings, while also being home to western-style cafes. It is dotted with various trendy shops and chic galleries, museums and restaurants along the streets. If you're in a hanbok, it's also fitting to make a stop here from the palace and snap some pictures. While some places are vintage, while others are contemporary, it adds to the district's charm, and all are unique and colourful.

Getting there:

5 minutes walk from the entrance of the National Folk Museum of Korea

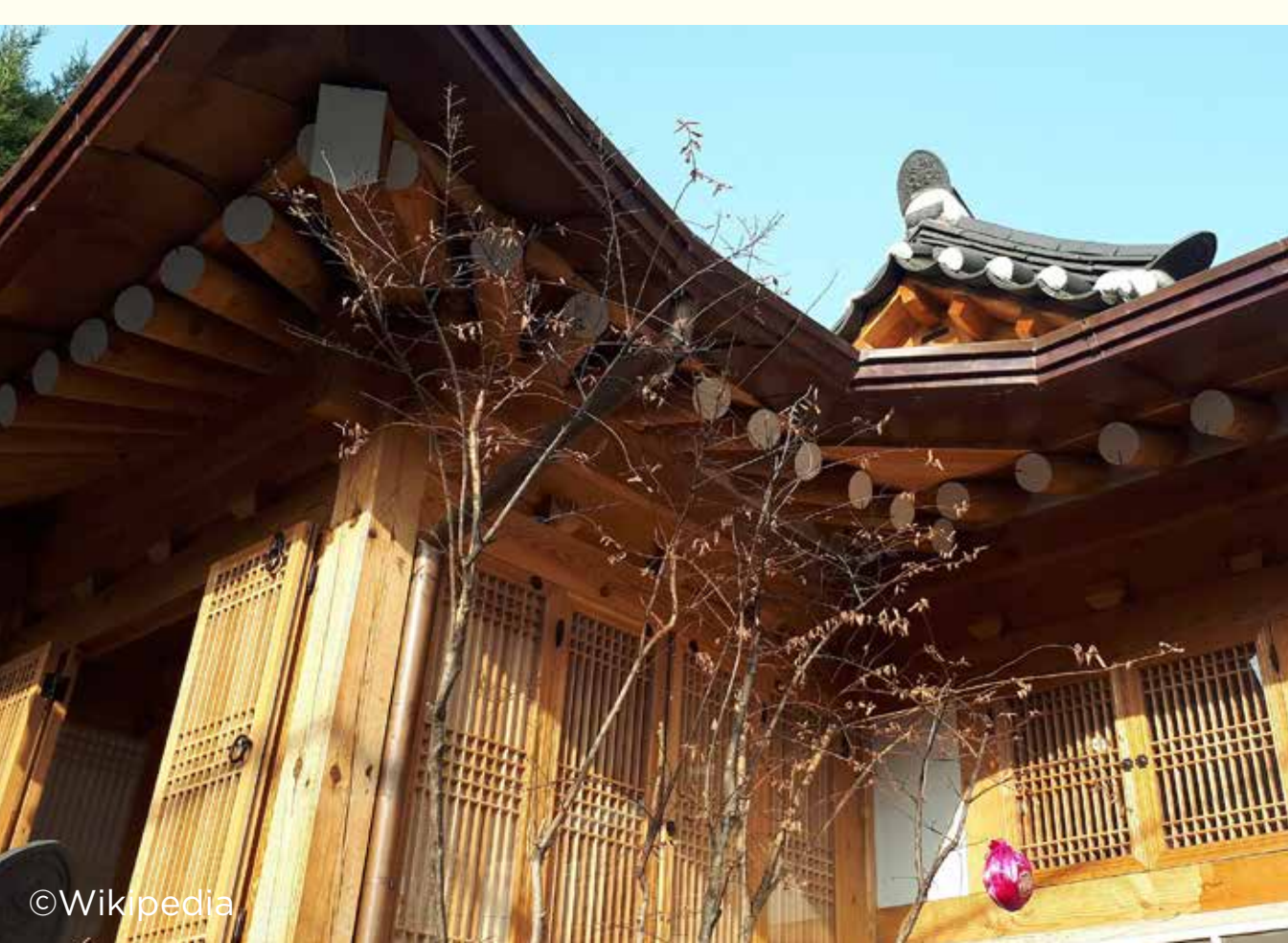
Address:

74-1, Samcheongdong, Jongno-gu, Seoul



©Wikipedia

SEE WHERE THE OLD MEETS NEW AT THE BUKCHON HANOK VILLAGE



1600-1730:

See where the old meets new at the Bukchon Hanok Village

The traditional village in the heart of a bustling city dates back all the way to the Joseon Dynasty, where you'll find yourself among hundreds of traditional houses in the quaint neighbourhood. While most of the hanoks have been converted into education centres, guesthouses, restaurants and tea houses, the village is a popular tourist attraction for those wanting to experience traditional Korean culture. Similar to Samcheongdong, the area is also known for its art scene weaved among its corridors and alleyways, especially since a number of the hanoks have been refurbished by young Seoul artists to host traditional art workshops, boutiques and studios in a charming environment.

A walking tour is also available for those keen to find out more, but remember to be quiet so as not to disturb the residents! Search for the places where Kdrama scenes are shot: they're right under your nose, including The Heirs where an egg tart shop in the area was featured as a dreamcatcher shop in the drama. There are surprises to be found around every corner, you won't leave disappointed.

Getting there:

Subway Line 3, Anguk Station, Exit 1 or 2

Address:

37, Gyedong-gil, Jongno-gu, Seoul

GET A NEW PERSPECTIVE OF HISTORY AT CHANGDEOKGUNG PALACE

1800-1930:

Get a new perspective of history at Changdeokgung Palace

Famous for its Injeongjeon Throne Hall featured in too many K-dramas to count, you'd get to admire the historical architecture from up close as you make your visit, especially the Gwallamjeong Pavilion shaped to resemble a fully opened fan. It consists of governmental and royal private areas separately, see if you're able to differentiate them as you tour the grounds.

One of the major official buildings is Injeongjeon, the main throne hall of the palace, where major state affairs including the coronation of a new king and receiving foreign ambassadors took place. You can tell it values formality and diplomacy as the hall is decorated in symbolic decorations. To let off some steam, take a stroll in the Secret Garden. It's no secret that the scenery and greenery there is jaw-dropping, as it was used for recreation and hosting banquets. During autumn

in Korea, it is known to be one of the best places to watch fall foliage and autumn leaves in the country. Tickets sell out way ahead of time.

Still within the palace grounds, our last stop would be at the Tongmyeongjeon, otherwise known as the Changgyeonggung Palace. It has a more humble design compared to other palaces, but had been home to the wives of kings on the east side of the grounds.

Access to some areas is restricted because of its cultural value, but visitors might be able to see them by joining the Huwon Garden tour. Some other areas are better preserved and have made their fair share

of scenes in dramas set in the past, such as Kingdom, Moonlight Drawn by Clouds and the Royal Gambler to name a few.



Getting there:

Subway Line 3, Anguk Station, Exit 3

Address:

99 Yulgok-ro, Jongno-gu, Seoul