

KLOOK

BANGKOK

city guide



YEAR END SALE **PROMO**

app only
RM100 OFF
<JOMHOLIDAY100>
MIN. RM1,200 SPEND

Enjoy RM100 off your travel activities booked on Klook's App with min. RM1,200 spent.

Promo ends 31 Dec 2018.
For details, visit
bit.ly/klookjomholiday

RM50 OFF
<JOMHOLIDAY50>
MIN. RM800 SPEND

Enjoy RM50 off your travel activities booked on Klook with min. RM800 spent.

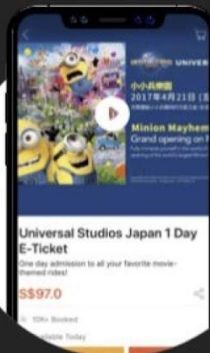
Promo ends 31 Dec 2018.
For details, visit
bit.ly/klookjomholiday

Step 01



Discover popular activities and utility products like transport and WiFi

Step 02

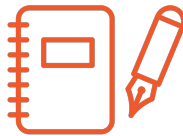


Add to cart and complete your purchase

Step 03



Skip the queues with your mobile e-tickets



Before you go

If you need some ideas on hotels you should stay at, here are some suggestions for every wallet size. These places are conveniently located near central Bangkok, making it easy for you to travel around! If you're on a budget, be sure to check out these [cheap and chic hotels](#).

| Budget | Hotel |
|--------------------|---|
| Under USD 40/night | <ul style="list-style-type: none">• THA City Loft Hotel• Cacha Hotel• S Box Sukhumvit |
| Under USD75/night | <ul style="list-style-type: none">• Glow Pratunam• Lemontea Hotel• FuramaXclusive Asoke Hotel Bangkok |
| Under USD150/night | <ul style="list-style-type: none">• Bangkok Marriott Marquis Queen's Park• Sofitel Bangkok Sukhumvit Hotel• The Westin Grande Sukhumvit Hotel |

Before leaving the airport, be sure to pick up the following items.

| Item | Location |
|--|---|
| 4G SIM Card | BKK Suvarnabhumi Airport (Klook Counter) Address: B Floor, RC6 (next to Airport Rail-Link Station) Opening Hours: Daily 8am to 11pm |
| One Day BTS Pass | |
| Airport Rail Link Ticket | |
| SEA Life Bangkok | DMK Don Muang Airport(Klook pick up spot) Address: Arrival Hall Gate 2 (Klook sign near escalator) Opening hours: Pick up is available 24 hours |

DAY 1 OVERVIEW

| Time | Activity | Getting there |
|------------|--|--|
| 0900-1000 | Have a bowl of boat noodles at Jeib Rot Dee Det | It is a 4 min walk from Siam BTS station. |
| 1010-1300 | Visit the sea critters of SEA Life Bangkok | It is a 6 minute walk from Jeib Rot Dee Det. |
| 1300-1400 | Lunch at Food Republic Siam | It is a 4 minute walk from Siam Paragon. |
| 1410-1710 | Your favorite stickers come alive at LINE Village | It is a 4 minute walk away. |
| 1715-1915 | Cuddle with an Fennec Fox at Little Zoo Cafe | It is a 5 minute walk away. |
| 1930- 2200 | Eat, shop and eat again at Neon Market | Take the BTS and alight at Chid Lom station, Neon Market is a 10 minute walk away. |
| | Return to hotel | |

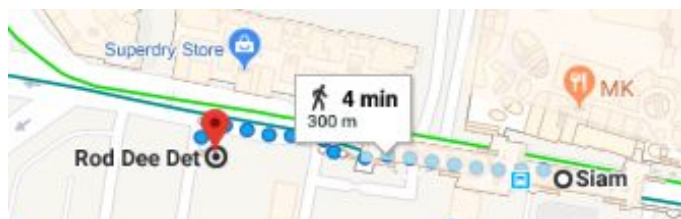
DAY 1 | Siam, Bangkok

1

0900-1000 Have Breakfast at Jeib Rot Dee Det

Kickstart your Thailand trip with a bowl of authentic and cheap boat noodles! Serving the same classic bowl of beef noodles costing just 50 THB a bowl, you'll be slurping up bowl after bowl.

The noodles come served in a bowl of intense beef flavored soup and the stewed beef literally melts in your mouth.



Getting there:

4 min walk from Siam BTS Station

Address: 236/3-4 Siam Square Soi 2, Pathum Wan, Bangkok 10330, Thailand

Opening hours: Daily 9am–10pm

2

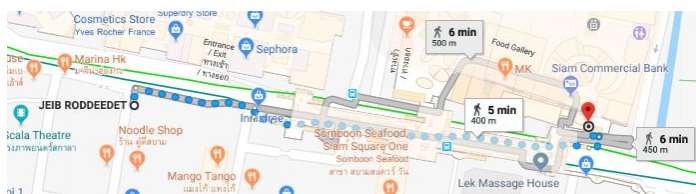
1010-1300: Visit the sea critters of SEA Life Bangkok

Head over to [SEA Life Bangkok](#) and explore the underwater world. You'll even get to set sail on a glass bottomed boat and see the marine life up close! Be sure to take the chance to interact with these animals during feeding time.

Getting there:

It is a 6 minute walk from Jeib Rot Dee Det.

Address: B1-B2 Floor, Siam Paragon, 991 Rama 1 Road, Pathumwan, Bangkok 10330 Thailand
Opening hours: Daily 10:00am-8:00pm



DAY 1 | Siam, Bangkok



3

1300-1400: Lunch at Food Republic

When travelling in a group, one of the hardest things to do is finding a food place to satisfy every taste bud. [Food Republic](#) will do just that!

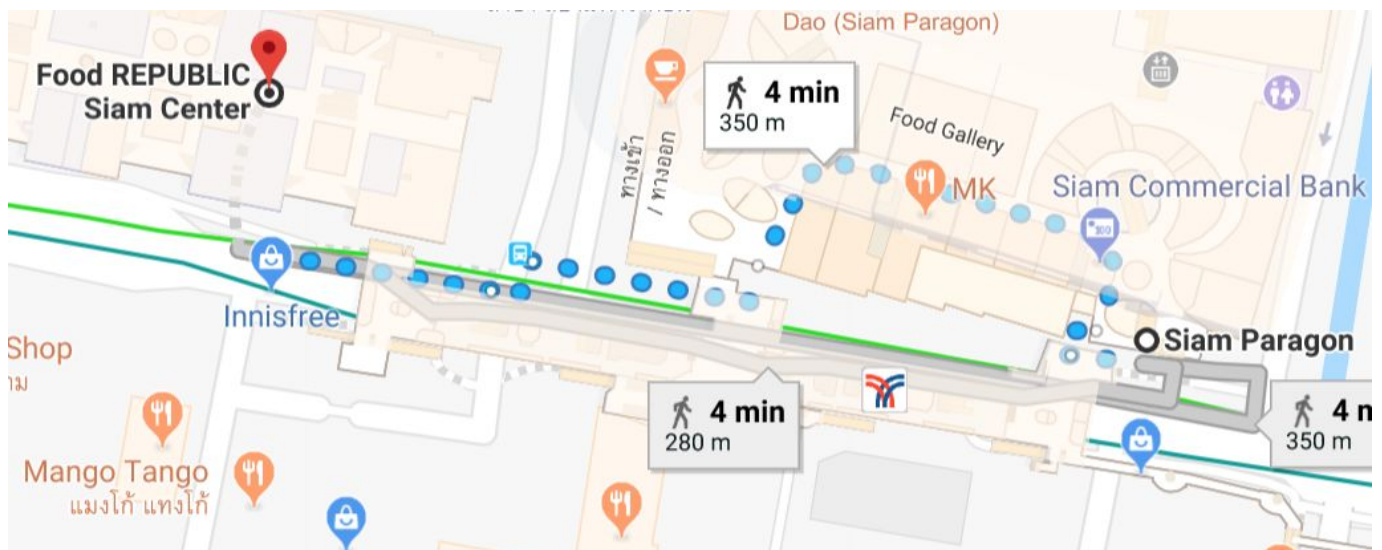
With a huge variety of food stalls from authentic Thai dishes like Pad Thai to street snacks like Fried Oyster Pancake and even Indian and European food stalls, you'll definitely find your pick here.



Getting there:

It is a 4 minute walk from Siam Paragon.

Address: 2nd Floor, Siam Center, Rama I Rd, Khwaeng Pathumwan, Pathum Wan District, Bangkok 10330
Opening Hours: Daily 10am-10pm



DAY 1 | Siam, Bangkok



4

1410-1710: Your favorite stickers come alive at LINE Village

Fans of the adorable LINE stickers will definitely have the [LINE Village](#) at the top of their must visit list in Bangkok! Watch your favorite LINE characters come to life in these different LINE themed rooms.

Set off on an adventure with life-sized Brown, Cony, Sally and friends as you enter the different themed rooms and play exclusive VR games.

Address: Siam Square One Building (SQ) 338 Rama 1 Road, 1st Floor, Pathumwan, Bangkok, 10330

Opening Hours: Daily 10am-10pm



5

1715-1915: Cuddle with a Fennec Fox at Little Zoo Cafe

How many of us can say that we've held a Fennec Fox with our bare hands before! At the Little Zoo Cafe, you get to play with exotic animals like Fennec foxes, Arctic foxes and the not so exotic cats and puppies! All you'll need to do is order a drink or some food from the cafe and you'll get to play to your heart's content!

Address: 420 Siam Square 11 Alley, Khwaeng Pathumwan, Khet Pathum Wan, Krung Thep Maha Nakhon 10330, Thailand
Opening Hours: Daily 11am – 9pm



DAY 1 | Siam, Bangkok

6

1930-2200 Eat, shop and eat again at Neon Market

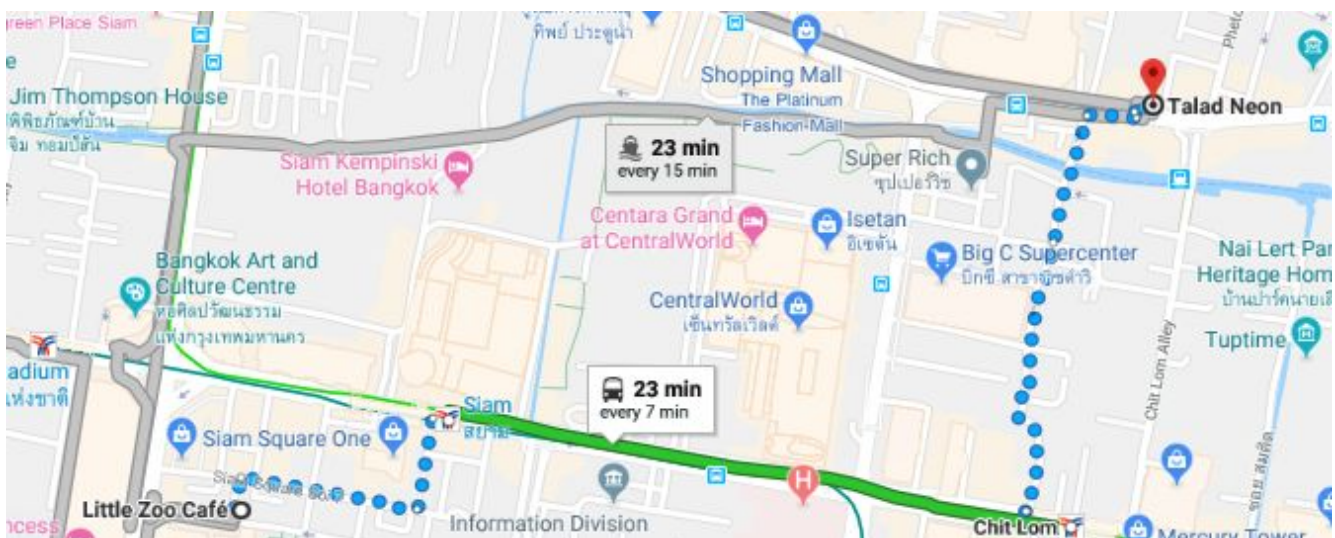
After a day out, the best way to spend your first night in Bangkok is at one of the many night markets! Located near Platinum Mall, this funky night market has rows of shipping containers, stalls selling novelty items, apparel, homeware and other trinkets.

And of course the biggest part of the night market is FOOD so grab a snack or two while you shop or sit down at the many food stalls for a Thai feast!

Getting There;

Take the BTS and alight at Chit Lom station, Neon Market is a 10 minute walk away.

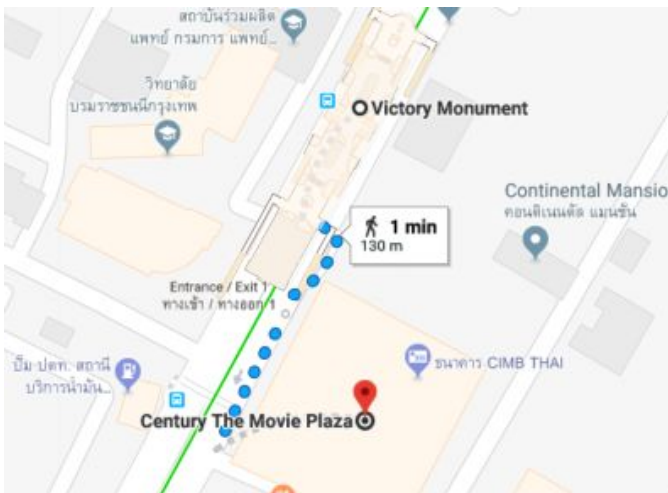
Address: 1087 ถนน เพชรบุรีตัดใหม่ Khwaeng Makkasan, Khet Ratchathewi, Krung Thep Maha Nakhon 10400, Thailand
Opening Hours: Wed to Sunday 4pm-midnight



DAY 2 OVERVIEW

| Time | Activity | Getting there |
|-----------|---|---|
| 0800-1400 | Live like a local and explore the floating market - Damnoen Sduak | Take the BTS to Victory Monument station, then leave the station using Exit 2 and walk straight ahead for approximately 100m to the meet up point |
| 1430-1700 | Shop til you drop at Platinum Mall | Alight at Chid Lom BTS and it is a 10 minute walk away. |
| 1730-1830 | Relax and rejuvenate at Let's Relax Spa | It is a 5 minute walk from Platinum Mall. |
| 1900-2230 | Dine on board and enjoy the views on the Chao Phraya Princess River Cruise | Take BTS to SAPHAN TAKSIN (S6) Station Exit 3, then get a taxi to River City Pier |
| | Return to hotel | |

DAY 2 | Bangkok City



1

0800-1400 : Live like a local and explore the floating markets

One of Thailand's oldest and most unique traditions are floating markets and the biggest and most popular one in Thailand is the [Damnoen Saduak Floating Market](#)! Hop onto a traditional long tail boat, sail down the narrow canals and get ready to shop!

From exotic fruits, beautiful fresh flowers, souvenirs and of course delicious street food, you'll easily spend the whole morning browsing. Don't forget to snap pictures of these unique Bangkok waterways!

Meet-Up Information

Time: 8:00am

Look for a Klook sign outside the entrance of Century Mall, opposite King Power Bangkok Rangnam.

Getting there:

Take the BTS to Victory Monument station, then leave the station using Exit 2 and walk straight ahead for approximately 100m

Address: Phayathai Rd, Khwaeng Thanon Phaya Thai, Khet Ratchathewi, Krung Thep Maha Nakhon 10400.

DAY 2 | Bangkok City



2

1430-1700: Shop till you drop at Platinum Mall

One of the best places to get cheap and trendy apparel is **Platinum Mall**! This wholesale shopping mall is best conquered with the squad because the more you buy, the lower the price per piece!

#Klook tip: Get 3 or more items from the store and ask the shopkeeper for a wholesale price!

Getting there:

Alight at Chit Lom BTS and it is a 10 minute walk away.

Address: 222 Petchaburi Road (Pratunam), Ratchathevee, Bangkok
Opening Hours: Daily 10am-8pm



3

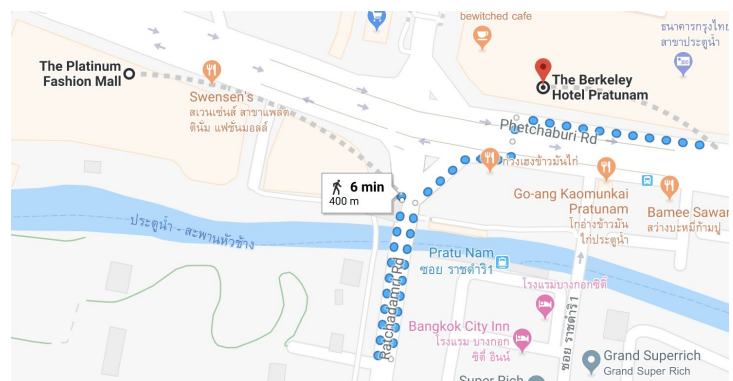
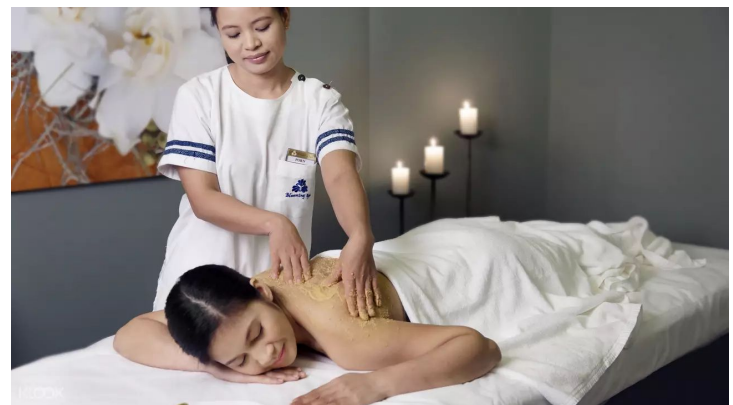
1730-1830: Relax and rejuvenate at Let's Relax Spa

Treat yourself to the ultimate pampering session in one of the best value spas in Bangkok, [Let's Relax Spa](#)! Whether you're looking for a traditional Thai massage or a body scrub, you'll find it here. Plus, after all that shopping, you'll be needing someone to massage those legs.

Getting there:

It is a 5 minute walk from Platinum Mall.

Address: 559 The Berkeley Hotel, Pratunam, 10 Floor, Ratchaprarop Road, Kwang Makkasan, Khet Ratchathewe, Bangkok 10400
Opening Hours: Daily 10am-midnight.



DAY 2 | Bangkok City

4

1900-2130: Enjoy the views on the Chao Phraya Princess River Cruise

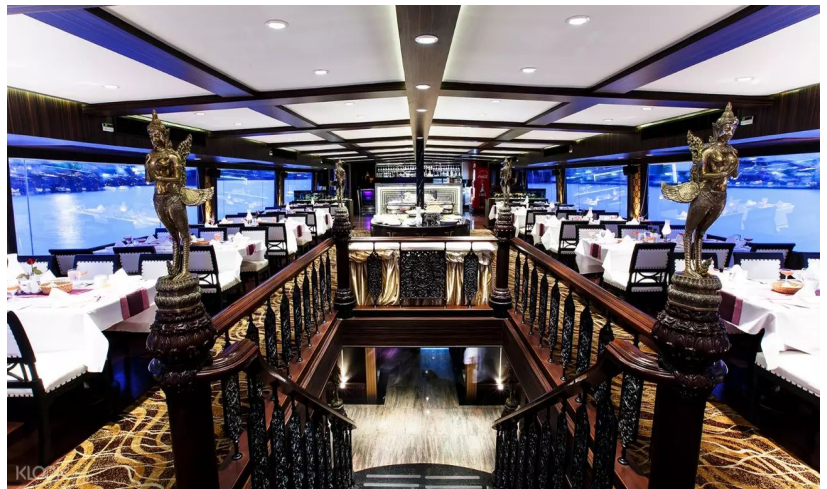
One of the best ways to take in some of Bangkok's most famous landmarks is on a river cruise. Hop on board the [Chao Phraya Princess Cruise](#) where you'll get to dine on Bangkok's beautiful waters while sailing past the sights.

The huge buffet spread will leave you spoilt for choice plus there's even live entertainment on board!

Meet-Up Information

Time: 7pm

Address: Chao Phraya Princess Cruise Check In Counter inside River City Complex, beside Pier 1, next to River City Plaza.



Getting there:

Take BTS to SAPHAN TAKSIN (S6) Station Exit 3, then get a taxi to River City Pier

Address: 3 Trok Rongnamkhaeng, Si Phaya Pier, Yota Road, Sampantawong, Bangkok 10100



DAY 3 OVERVIEW

| Time | Activity | Getting there |
|-----------|--|-----------------------------------|
| 0700-1000 | Depart from Bangkok | Klook Car Charter |
| 1000-1200 | Explore Primo Piazza | |
| 1200-1330 | Lunch at PB Valley Khao Yai Winery | |
| 1330-1430 | Capture some Instagrammable moments at The Bloom By TV Pool | |
| 1430-1600 | Visit The Chocolate Factory | |
| 1600-1730 | Visit Palio Khao Yai | |
| 1730-1900 | Dinner At Krua Nan Narm | |
| | Return to hotel | |

DAY 3 | Khao Yai



Getting to Khao Yai

Khao Yai is located just a 3 hour drive away from Bangkok! Klook your [Khao Yai custom tour](#) and let the driver pick you up from Bangkok and take you to Khao Yai in a comfortable air conditioned vehicle.

Better yet, he will also take you to all the must visit spots in the city! Just hand him your itinerary and you're all set! He can even recommend places that the locals frequent.

DAY 3 | Khao Yai

1

1000-1200: Wander around “Little Italy” - Primo Piazza

Step into Primo Piazza and get ready to be transported to a Little Italy right in the middle of Khao Yai! With warm terracotta hues all along the streets, get ready your cameras for those #OOTDs. Don't miss out on a barn experience where you'll get to pat sheeps, alpacas and even donkeys!



Address: Mu Si, Pak Chong District, Nakhon Ratchasima 30130, Thailand
Opening Hours: Daily 9am- 6pm

2

1200-1330: Wine and dine at PB Valley

If you love wines, you'll definitely want to make a stop at [PB Valley Winery in Khao Yai!](#) Have a taste of locally produced wines at Khao Yai's largest vineyard! Whether you prefer reds or whites or even rose, they've got you covered.

You can even take a behind the scenes wine making tour where you'll learn the secrets behind a good bottle.

Address: 102/2 Moo5, Mitraparp Road Payayen Pakchong Nakhon Ratchasima 30320, Thailand
Opening hours: Sun-Thurs 8am-8pm | Friday and Saturday 8am-10pm



DAY 3 | Khao Yai



3

1330-1430: Frolic around the flower fields at The Bloom

The Bloom is Thailand's biggest flower garden and if you're looking for some flora and fauna to gaze at, look no further! With over 30 different species of flowers, these are not just easy on the eyes but also on the nose. There are also random quirky installations like giant handbags and windmills for those photo moments.

Address: Unnamed Road Tambon, Phaya Yen, Pak Chong District, Nakhon

4

1430-1600: Sample local chocolates at The Chocolate Factory

Who doesn't love chocolate! Visit Khao Yai's very own chocolate factory and take a peek into the secrets behind chocolate making. Plus, you'll even get to sample the different types of chocolate, satisfying your sweet tooth.



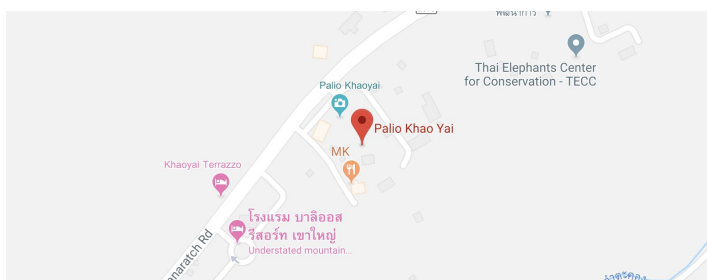
Address: Pak Chong, Pak Chong District, Nakhon Ratchasima 30130, Thailand
Opening Hours: Mon-Thurs 9.30am-9pm | Friday-Sunday 9.30am-10pm



DAY 3 | Khao Yai



Address: ถนน ธาระรัตต์ Tambon Mu Si, Amphoe Pak Chong, Chang Wat Nakhon Ratchasima 30130, Thailand
Opening Hours: Daily 10am-7am



5

1600-1730: Have an ice cream at the picture perfect Palio Khao Yai

Palio Khao Yai is a tiny little charming village, themed after the streets of Tuscany! Located up on a hill, enjoy the cool breeze as you stroll along the different stores. Pick up a little trinket or two to take home as a souvenir or enjoy an ice cream at the many cafes!



6

1730-1900: Dine by the river at Krua Nan Narm

End off your day with a hearty Thai dinner at Krua Nan Narm, a local's favorite! Located along the river, enjoy great views of the river while you chow down on some of their specialties. The must try dishes include the house speciality curry and the snake fish titbit!

Address: 109/1, Mittaphap Road, Tambon Nong Sarai, Amphoe Pak Chong, Nakhon Ratchasima, 30130, Thailand

DAY 4 OVERVIEW

| Time | Activity | Getting there |
|-----------|---|-----------------------------------|
| 0930-1020 | Head to Khao Yai National Park | Klook car charter |
| 1030-1120 | Marvel at Haew Narok Waterfall | |
| 1130-1220 | Take a short hike to Pa Deo Die Cliff | |
| 1230-1300 | Lunch at Krua Lam Traklong | |
| 1315-1415 | Walk to Haew Suwat Waterfall | |
| 1430-1630 | Get lost in Pete's Maze | |
| 1700-1750 | Wander through the Bat Cave at Wat Tham Sila Thong | |
| 1800 | Dinner at Midwinter Green | |
| | Return to hotel | |

DAY 4 | **Khao Yai**



1

0930-1030: Hike along Khao Yai National Park

Kickstart your morning with a hike at the UNESCO World Heritage Site, Khao Yai National Park! Keep your eyes peeled because the untouched jungles and streams hide exotic animals and birds.

2

1030 - 1130: Haew Narok Waterfall

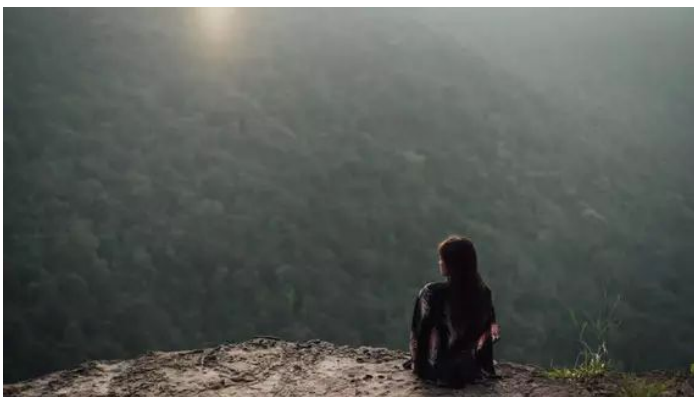
Standing at 150 metres tall, the Haew Narok Waterfall is the most majestic of them all. Also located in Khao Yai National Park, be prepared to climb a healthy flight of stairs before reaching the falls.



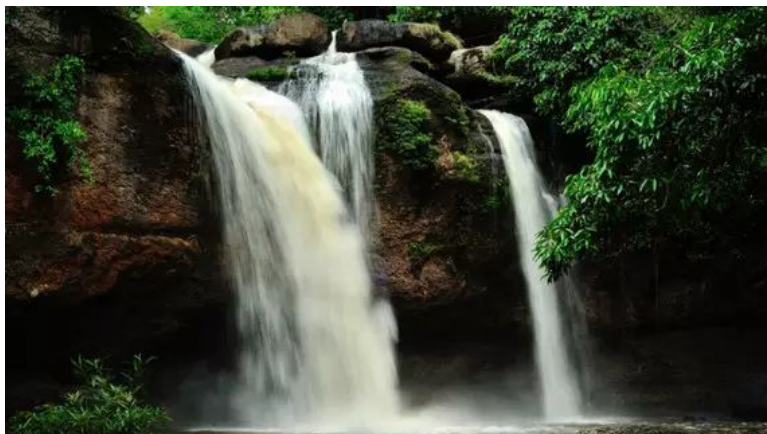
3

1130-1230: Sit on the edge of the Pa Deo Die Cliff

Possibly the most scenic point of the Khao Yai National park, the Pa Deo Die Cliffs offer some of the most panoramic views of the park. Hang your legs over the edge and just enjoy the views!



DAY 4 | **Khao Yai**



4

1315-1415: Haew Suwat Waterfall

After trekking around the Khao Yai National Park, cool off with a dip in the Haew Suwat Waterfall! Dropping from a height of 20 metres, let the cool waters massage your tired bodies!

5

1430 - 1630: Get lost at Pete's Maze

While none of us enjoy getting lost in a foreign land, Pete's Maze just might change your mind. Wander around the rows of green leafed roads and try to find your way out!



6

1700-1750: Bat Cave

The Bat Cave located at the Wat Tham Sila Thong Buddhist Temple is definitely a sight to behold. Watch a river of wrinkle lipped bats soar above your heads as they hunt for food.

These bats act as natural biological pesticides, keeping the crops around the area pest free!



DAY 4 | Khao Yai

7

1800: Dinner at Midwinter Green

Step into the castle grounds of Midwinter Green and feel like royalty! This medieval themed restaurant doesn't just serve up great food, the ambience is set to take your romance game to the next level.

Be sure to try the Midwinter pizza! These delicious parcels come served more like Mexican quesadillas than your traditional pizza.

Address: 10 88/88 Soi Ban Sai Thong Mu 24 Soi 2, Nong Nam Daeng, Pak Chong District, Nakhon Ratchasima 30130, Thailand
Opening Hours: Sunday-Thursday 10am-10pm | Friday-Saturday 10am-11pm



DAY 5 OVERVIEW

| Time | Activity | Getting there |
|-----------|--|-----------------------------------|
| 1030-1230 | Visit the Hobbit House | Klook car charter |
| 1230-1400 | Lunch at Ban Mai Chay Nam | |
| 1400-1500 | Get lost in flower fields at Flora Park at Wang Nam Khiao | |
| 1500-1600 | Feed a sheep at A Cup of Love | |
| 1600-1830 | Step into little Verona at Tub Lan | |
| 1830 | Depart for Bangkok | |
| 2130 | Arrive in Bangkok | |
| | Return to hotel | |



1

1030-1230: Visit the Hobbit House

The Hobbit House is a must see for fans of the Lord of the Rings trilogy. Put on a costume from medieval times and pretend that you're the residents of one of these tiny little homes. You'll definitely be amazed at the attention to detail at these replicas.

If you're not a fan of the Lord of the Rings trilogy, there are also costumes from Frozen and even Harry Potter!



2

1230-1400: Lunch at Baan Mai Chay Nam Restaurant

This restaurant doesn't just serve delicious food, it also doubles up as a museum of antiques! Figurines of childhood favorites like Superman and even Colonel Sanders will definitely take you down memory lane.

3



1400-1500: Get lost in flower fields at Flora Park at Wang Nam Khiao

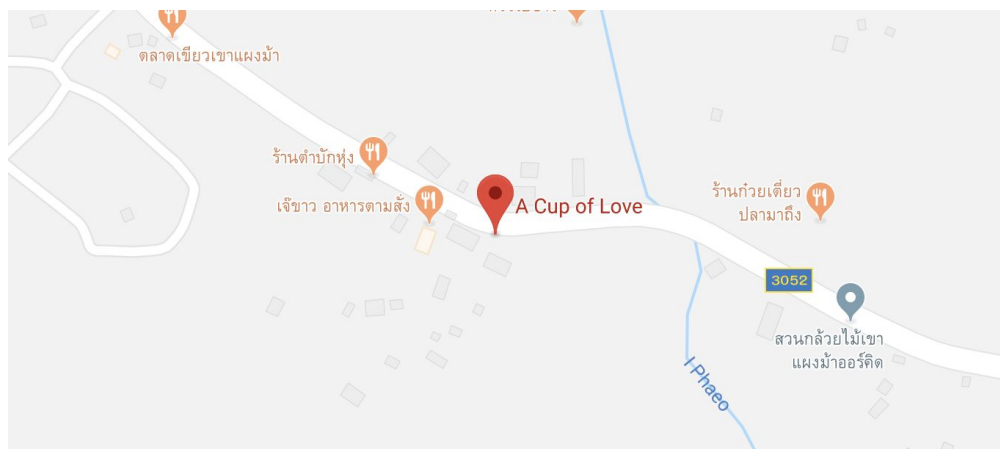
Get lost in the labyrinth fields of flowers at the Flora Park! These intricate flower displays are definitely worth a visit just for the sheer volume of flowers in an area.

Plus, with the fresh mountain breeze and great photo opportunities, what more could you ask for!

4

1500-1600: Have a cuppa at A Cup of Love

Away from the hustle of the city and overlooking large green fields is A Cup of Love! Order a slice of cake and an afternoon cuppa and just relax on the lawn. Don't forget to head over to feed the sheep before leaving!



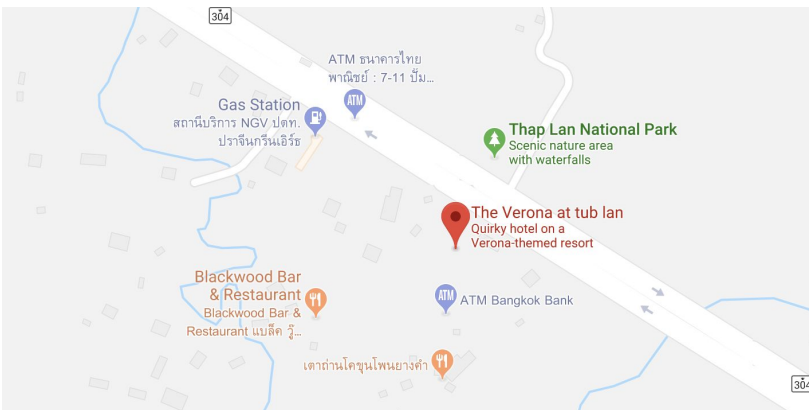
5

1600 - 1830: Step into Little Verona at Tub Lan!

If you've always wanted to take a trip to Verona in Italy but never had the chance to, now you can take a little sneak peak at The Verona.

Crafted to replicate the ancient city of Verona, expect some of the most picturesque bridges and streets that will have you stopping for photos the whole way.

Address: Bu Phram, Na Di District, Prachin Buri 25220, Thailand



DAY 6 OVERVIEW

| Time | Activity | How To Get There |
|-----------|---|--|
| 0915-1400 | Recreate your favorite Thai dishes at the Sompong Thai Cooking Class | Take the BTS to Chong Nonsi Station and a pickup car will take you to the class |
| 1400-1445 | Travel to the Emerald Buddha | Take the BTS to Saphan Taksin and take the river taxi to The Chang. |
| 1445-1645 | Visit the Emerald Buddha and Grand Palace | It is a 4 minute walk to the Grand Palace |
| 1645-1800 | See the largest sleeping Buddha at the Wat Pho Complex | It is a 5 minute walk to the Wat Pho complex. |
| 1800-1930 | Travel to Rot Fai Ratchada | Take the river taxi to Sathorn pier and take the BTS from Saphan Taksin to Sala Daeng. |
| 1900 | Chill out at the Rot Fai Ratchada night market! | |
| | Return to hotel | |

DAY 6 | Bangkok Old City



1

0915-1400: Recreate your favorite Thai dishes at the Sompong cooking class

Many of us travel to Bangkok just to get our fill of delicious Thai food. Why not learn how to recreate those dishes and immortalize your Thailand holiday memories at the [Sompong Thai Cooking class](#).

Beginning from shopping for the ingredients right up to creating your own curry paste and finally cooking up dishes, you'll be guided by a professional chef the entire class.

Getting there:

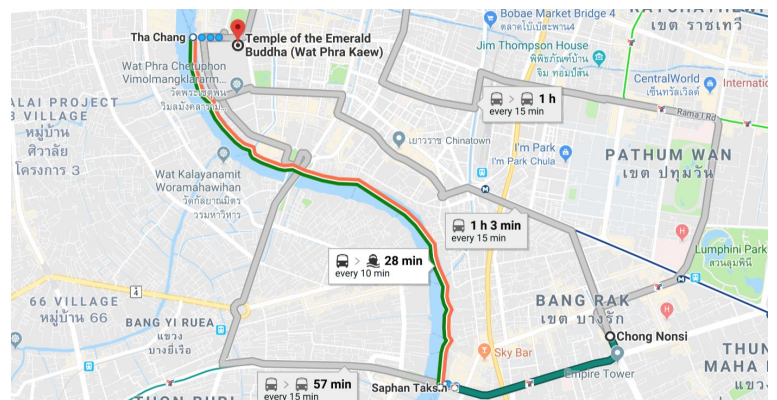
Take the BTS to Chong Nonsi exit 3 and a pickup car will take you to the class

2

1445-1645: Visit the Emerald Buddha and Grand Palace

Apart from shopping, some of the key attractions in Bangkok lie in the rich history of the city. Start off with the Emerald Buddha in Thailand's most iconic temple the Wat Phra Kaew.

After which, head to the official home of the Kings of Siam, the majestic Grand Palace.



Getting there:

Take the BTS to Saphan Taksin and take the river taxi to The Chang. It is a 4 minute walk away.

DAY 6 | Bangkok Old City

3



1645-1800: Visit the gold plated sleeping Buddha

The Wat Pho is a Buddhist temple complex that houses a giant gold plated reclining Buddha! Measuring 46 metres long and covered in gold leaf, it is definitely a sight to behold.

Wat Pho is also considered to be the leading school of massage in Thailand, making it a great place to get a traditional Thai massage!

Getting there:

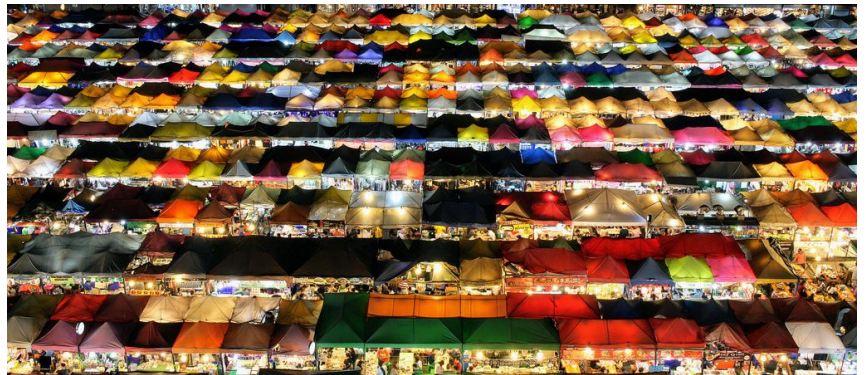
It is a 5 minute walk to the Wat Pho complex from the Grand Palace.

4

1900: Chill out at Rot Fai Ratchada

The best way to end off a day in Bangkok is undoubtedly at the night markets. Rot Fai Ratchada is home to antique stores, street food galore, trinkets and apparel stands and so much more.

Fill your bellies at the many food stores before getting your shopping done. Don't forget to bargain before purchasing!



Getting there:

Take the river taxi to Sathorn pier and take the BTS from Saphan Taksin to Sala Daeng.

Address: Bu Phram, Na Di District, Prachin Buri 25220, Thailand



DAY 7 OVERVIEW

| Time | Activity | How To Get There |
|-----------|--|--|
| 1000-1200 | Shop til you drop at Chatuchak Market | Take the BTS to Mo Chit station. |
| 1200-1230 | Travel to Truelove @ Neverland | Take the BTS to Ari and take a tuk tuk to Truelove |
| 1230-1415 | Hug a husky at True Love @Neverland | |
| 1415-1455 | Travel to Boxing King | Get off at Siam station and use the exit leading to Digital Gateway. After that, walk toward MBK to reach Siam Square Soi 1, then walk straight in Siam Square Soi 1 until you find a Boxing King poster or a black building with horse statues. |
| 1500-1630 | Up your fitness game at a Muay Thai Class | |
| | Travel to Siam Niramit | Siam Niramit runs a free shuttle bus from Thailand Cultural Centre MRT Station, Exit 1. Pickups begin at 5:15pm, at roughly 15 mins intervals |
| 1700-2130 | Enjoy a dinner show at Siam Niramit Bangkok | |
| | Leave for home | |

DAY 7 | Chatuchak, Bangkok

1

1000-1200: Shop, eat and shop some more at Chatuchak market

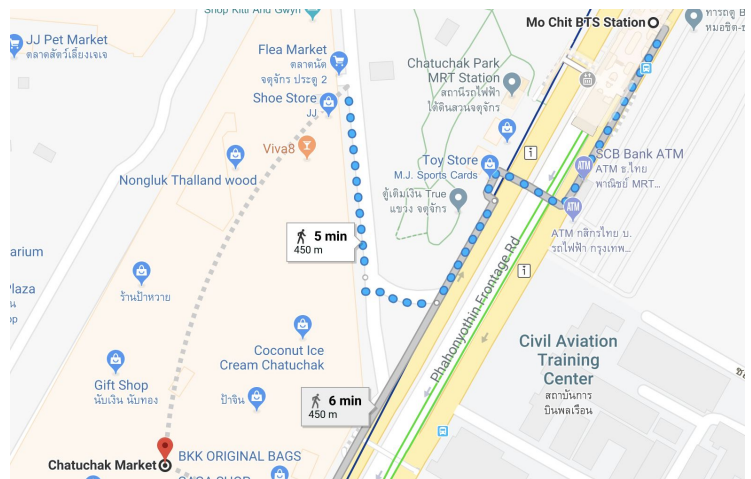
If you've never been to Chatuchak market, get ready to be overwhelmed! With over 15,000 booths selling clothes, handicrafts, furniture and even live animals, you can spend forever browsing here.

Check out our [tips to conquering the Chatuchak market](#).

Getting there:

Take the BTS to Mo Chit station.

Address: Kamphaeng Phet 3 Rd, Khwaeng Lat Yao, Khet Chatuchak, Krung Thep Maha Nakhon 10900, Thailand



2

1230-1415: Hug a husky at Truelove @ Neverland

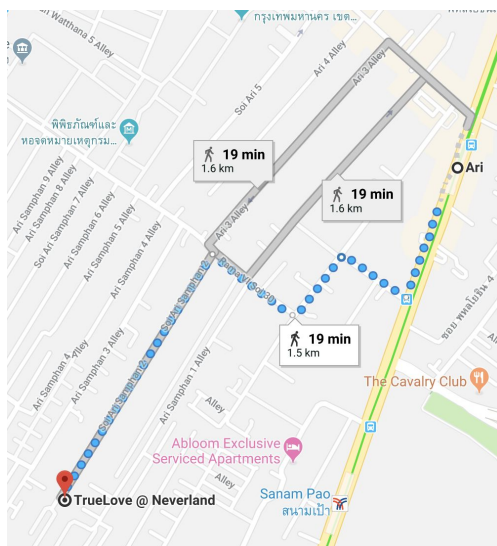
How many of us have dreamed of being surrounded by cute dogs! Well, now you can make your dreams come true at the Truelove cafe!

With 23 different huskies to play with, you'll be surrounded by these furry friends all waiting to play a game of fetch.

Getting there:

Take the BTS to Ari and take a tuk tuk to Truelove

Address: 153 Soi Ari Samphan 2, Phaya Thai Khet Phaya Thai, Krung Thep Maha Nakhon 10400, Thailand



DAY 7 | Chatuchak, Bangkok



3

1500-1630: Level up your fitness game at Boxing King!

After feasting on all that delicious Thai food, it's time to work it off! Learn powerful self defence techniques from Muay Thai professionals while working up a sweat at [Boxing King!](#)

Don't worry, people of all fitness levels and experience levels are welcomed.

Getting there:

Get off at Siam station and use the exit leading to Digital Gateway. After that, walk toward MBK to reach Siam Square Soi 1, then walk straight in Siam Square Soi 1 until you find a Boxing King poster or a black building with horse statues.

Address: Kamphaeng Phet 3 Rd, Khwaeng Lat Yao, Khet Chatuchak, Krung Thep Maha Nakhon 10900, Thailand



4

1700-2130: Enjoy dinner and a Thai cultural show!

The [Siam Niramit show](#) is one of the best ways to learn about the city's cultures. With stunning backdrops, jaw dropping acrobatic and dance sequences and thumping sound scores, you'll definitely be at the edge of your seat the entire time.

Enjoy a sumptuous buffet before the show and you won't have to worry about grumbling stomachs during!

Getting there:

Siam Niramit runs a free shuttle bus from Thailand Cultural Centre MRT Station, Exit 1. Pickups begin at 5:15pm, at roughly 15 mins intervals

