

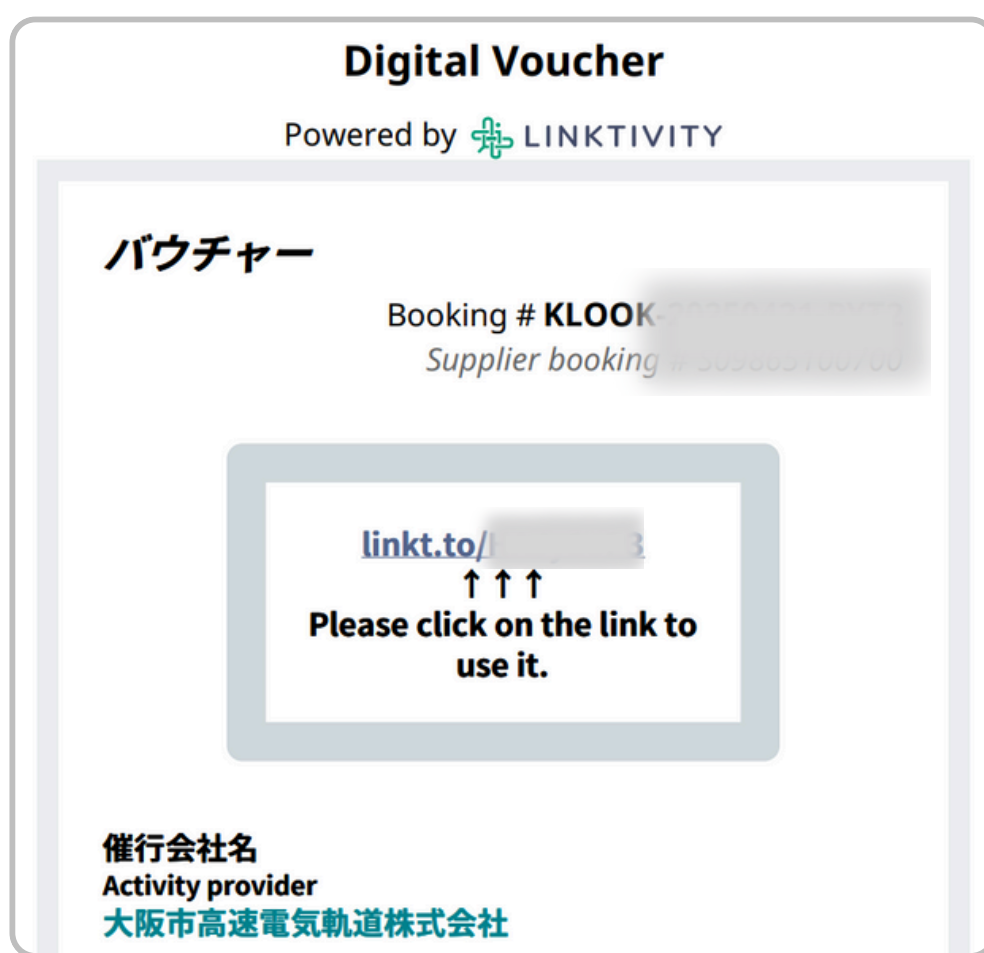
# Osaka Metro Pass



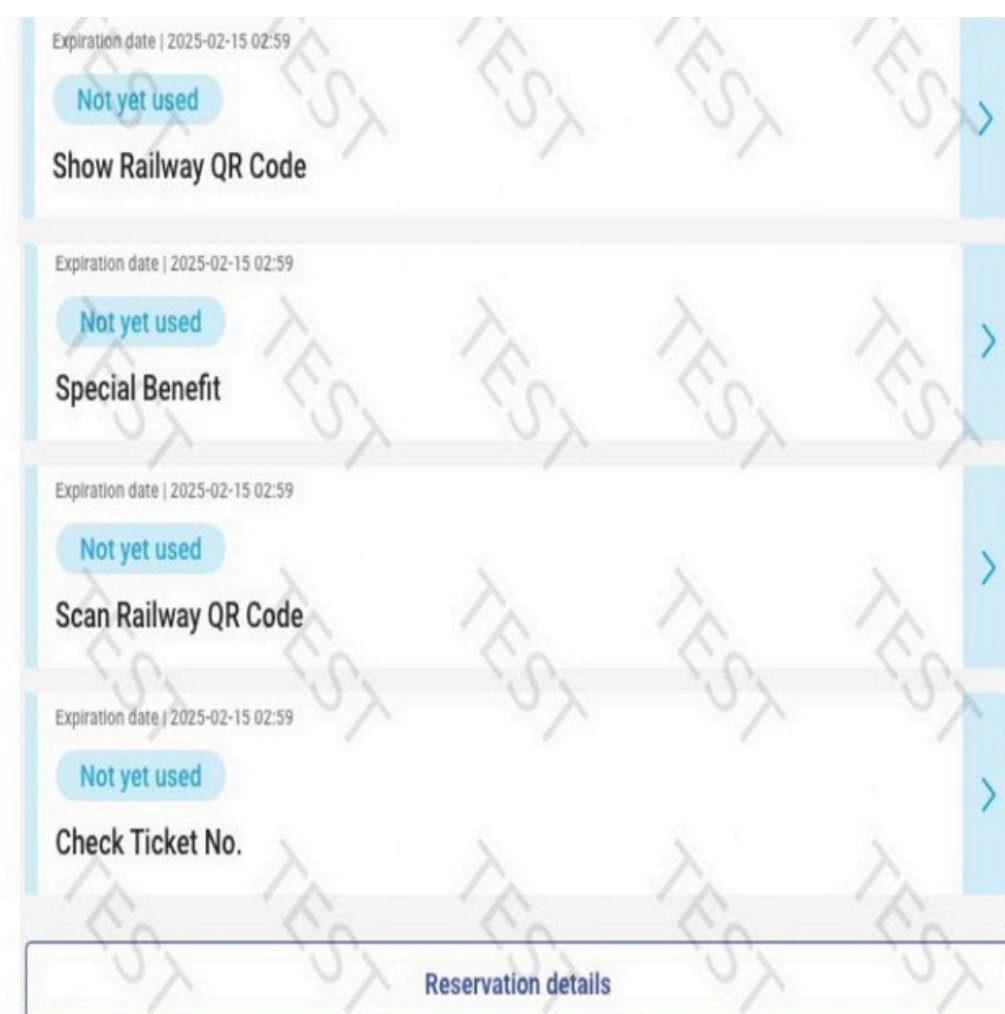
## Ticket list screen

- Switch the language on the ticket list page before use

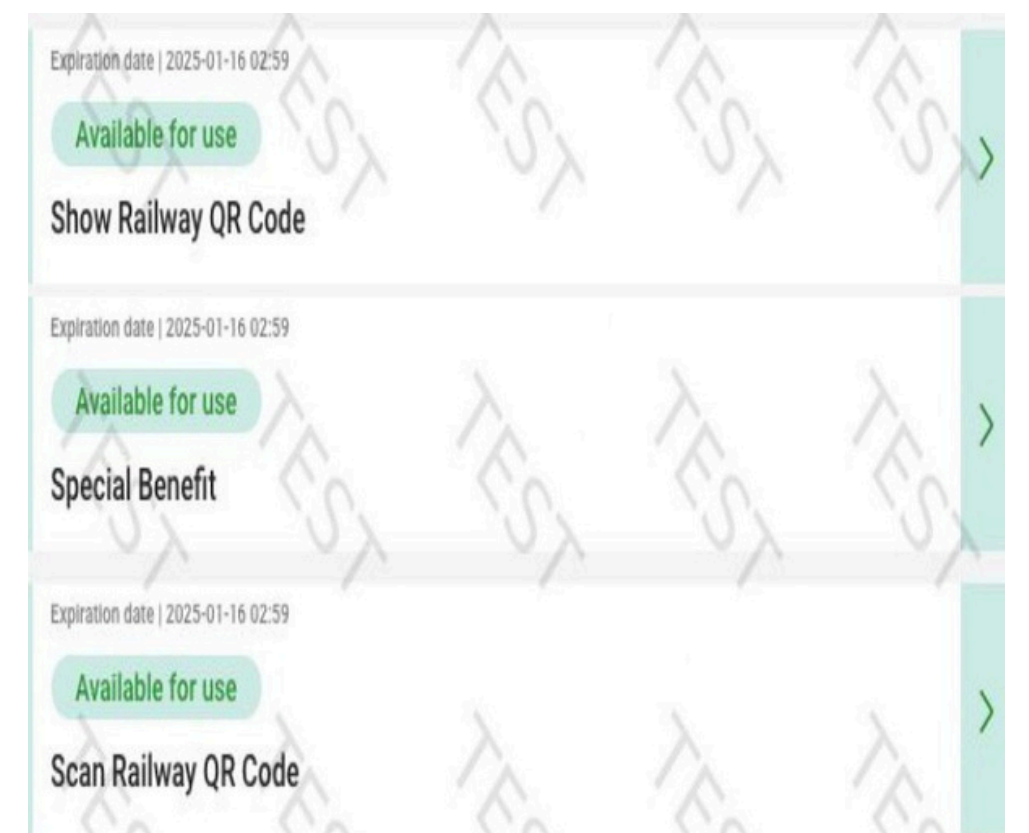
1 Access the link from your voucher



2 Unused tickets will appear in blue



3 Once you start using any tickets, it will turn green



## Accessible route

### Train

 御堂筋線  
Midosuji Line

 四つ橋線  
Yotsubashi Line


 千日前線  
Sennichimae Line

 谷町線  
Tanimachi Line

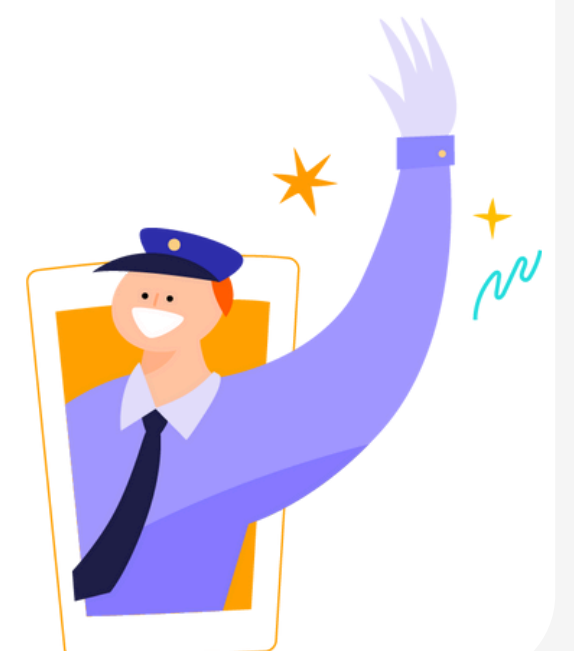
 中央線  
Chuo Line

 堺筋線  
Sakaisuji Line

 長堀鶴見緑地線  
Nagahori Tsurumi-ryokuchi Line

 ニュートラム  
New Tram

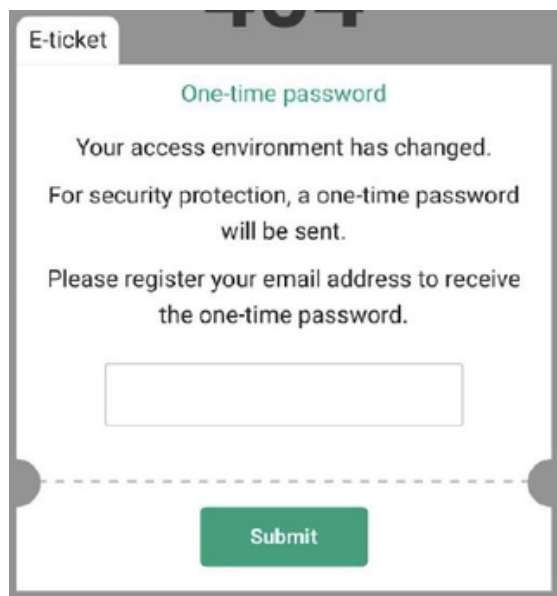
 今里筋線  
Imazatosuji Line



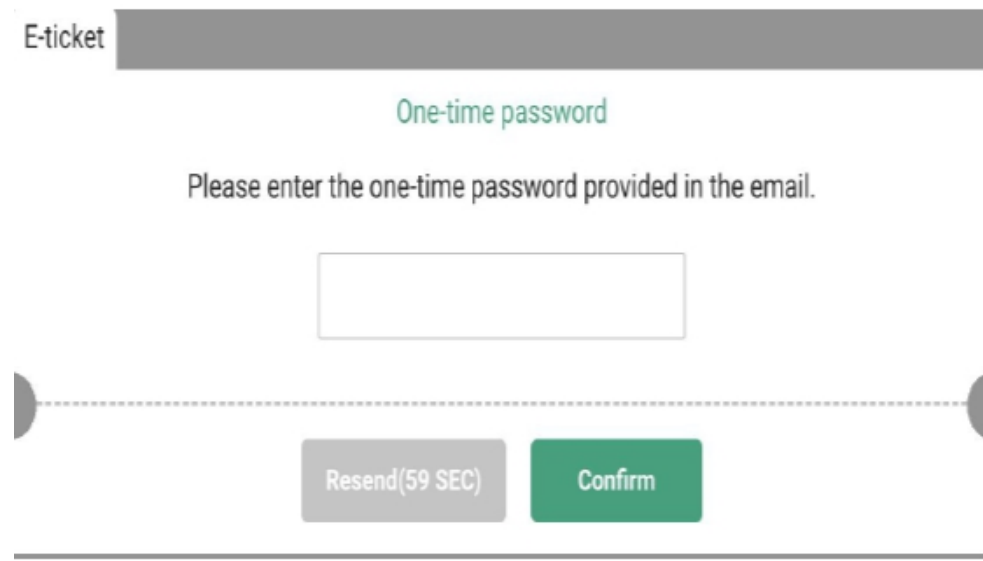


## One-Type Password (OTP)

To prevent access by unauthorized users, an OTP is required. Use your own email address, as it cannot be changed once authentication is complete

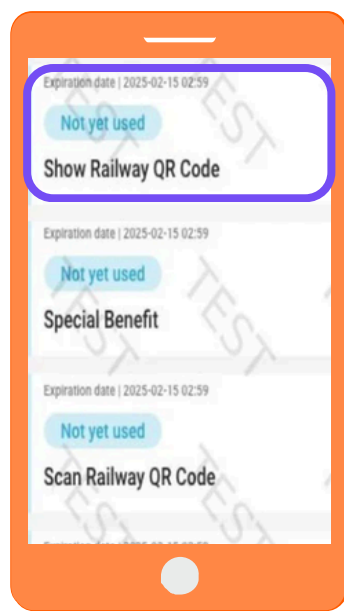


1 Enter your valid email address



2 Check your email and enter the OTP

## How to ride a train



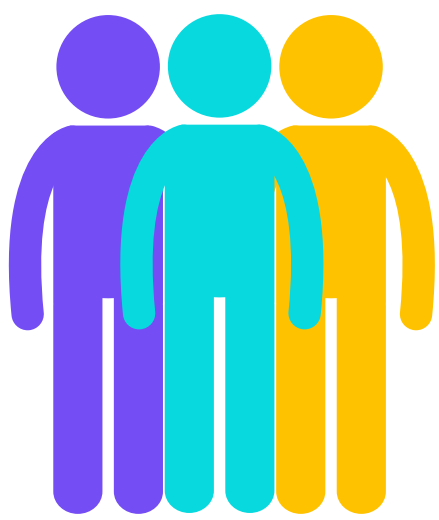
1 Click on "Show Railway QR code" and "Start using"



2 Scan the QR code at the ticket gate to enter



## Multiple redemptions (train)



1 Each person is limited to one QR code

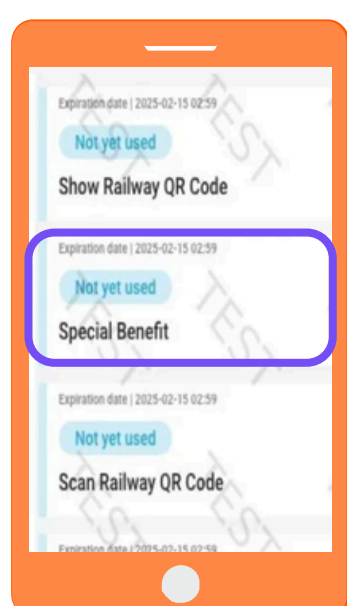


2 Swipe and scan the QR code at the ticket gate per person. Device holder enters last



## Special benefit

### Available facilities



1 Click on "Special Benefit"



2 Show the screen to the reception staff

