

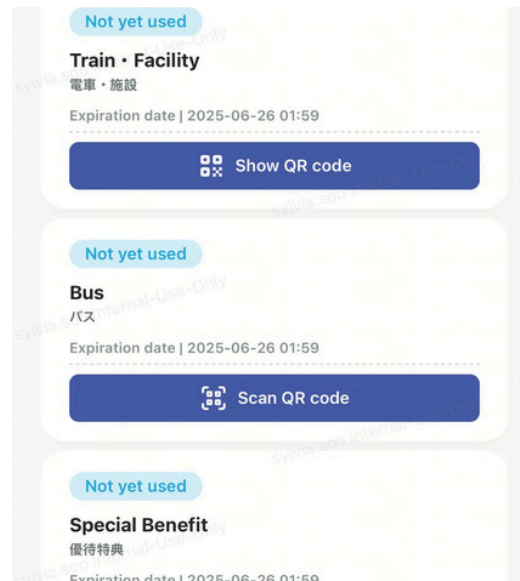
# Osaka Amazing Pass user guide

## Ticket list page

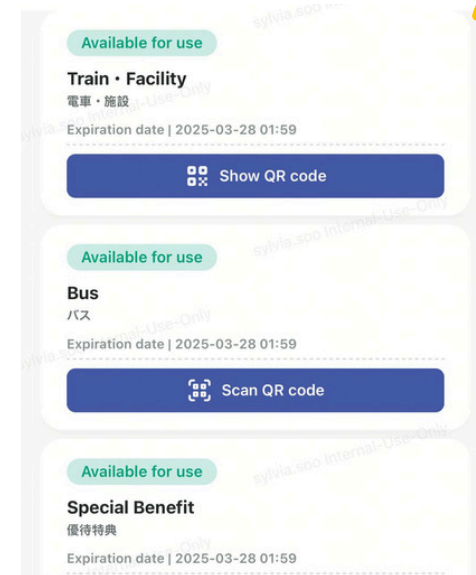
1 Access the link from your voucher



2 Unused tickets will appear in blue



3 Once you start using any tickets, it will turn green



## Trains and buses that can be used with Osaka Amazing Pass

### Osaka Metro

- M Midotsuji Line
- T Tanimachi Line
- Y Yotsubashi Line
- C Chuo Line
- S Sennichimae Line
- K Sakaisuji Line
- N Nagahori Tsurumi-Ryokuchi Line
- I Imazatosuji Line
- P New Tram Line
- Imazato Liner

### Private Railway

- H Hankyu Railway
- K Keihan Electric Railway
- N Nankai Electric Railway
- H Hanshin Electric Railway
- K Kintetsu Railway

1 2 = Available facilities. Refer to the [official website](#) for facility name

= The gray area shows where the pass is valid for Osaka City Bus

= The green area shows where the pass is valid for Osaka Amazing Pass

= The dotted area shows where the pass is valid for Osaka Monorail Version

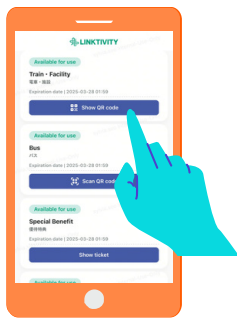
### THINGS TO NOTE:

- Lines not mentioned here are unavailable for use with Osaka Amazing Pass
- The Osaka City Bus is also available with the Osaka Amazing Pass (Except IKEA Tsuruhamma shuttle bus and Universal Studios Japan™ shuttle bus)
- The route map is as of 25 March 2025



# How to Use Osaka Amazing Pass

## How to ride a train



1

Click on "Show QR code"  
under "**Train - Facility**"



2

Scan the QR code at  
the ticket gate



3

Only one person can pass  
through at a time. Device  
holder enters last

## Multiple redemptions (Train)



1

Each person is limited to  
one QR code



2

Swipe and scan the QR code at  
the ticket gate per person

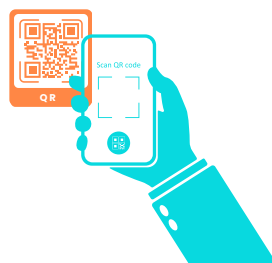


## How to ride a bus



1

Click on "Scan QR code"  
under "**Bus**", allow camera  
access and click on "Start  
using"



2

After boarding, scan the QR  
code inside the bus  
(The QR code will expire in  
15 minutes)



3

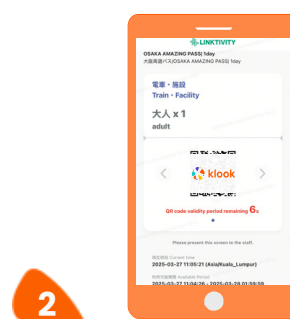
Show the authorization screen  
to the bus driver when getting  
off. If it expires, please re-scan  
the QR code

## How to enter a facility

Available Facilities

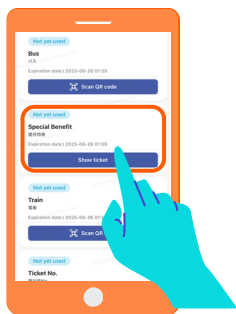


Click on the QR code option

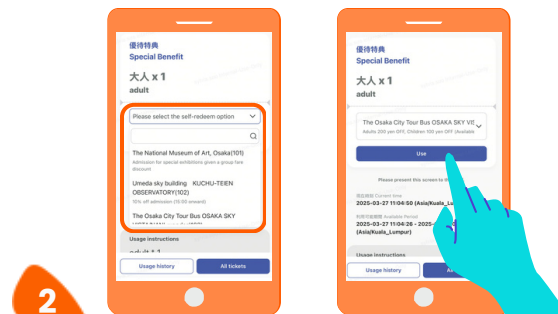


Show the QR code to the staff for scanning

## How to redeem special benefit



Click on **"Show ticket"** under **"Special Benefit"**



Select the discounted facility and click **"Use"**

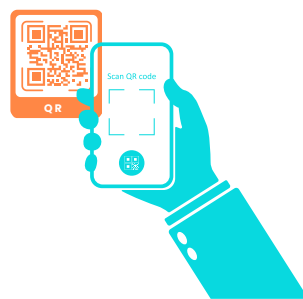


Show the authorization screen to the staff

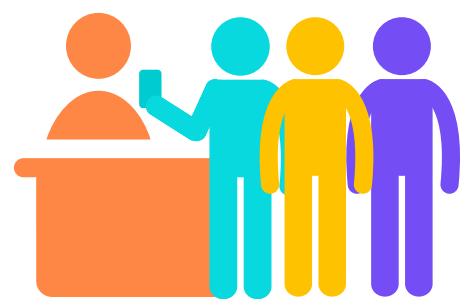
## Multiple redemptions (Bus, facilities and attractions)



Only one redemption is needed



Scan the QR code



Show the authorization screen to the staff