

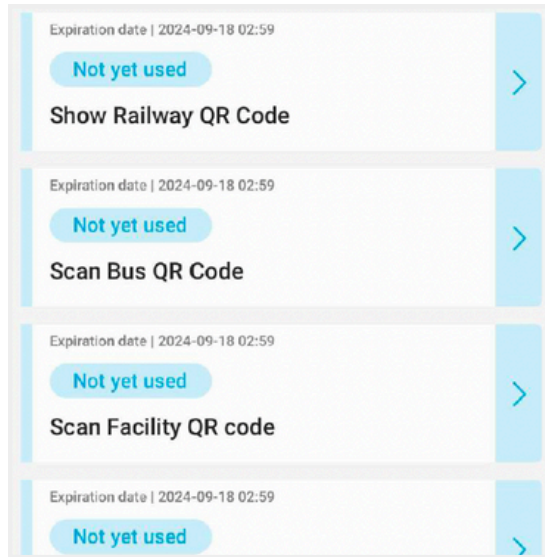
Osaka Amazing Pass User Guide

Ticket list page

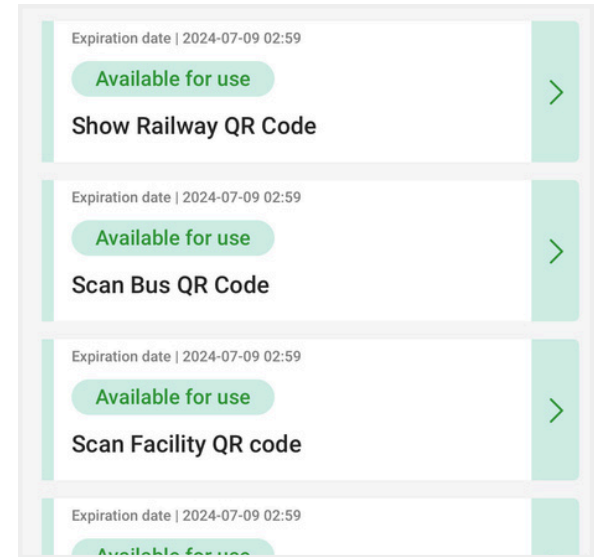
1 Access the link from your voucher



2 Unused tickets will appear in blue



3 Once you start using any tickets, it will turn green



Trains and buses that can be used with Osaka Amazing Pass

Osaka Metro

- Midosuji Line
- Tanimachi Line
- Yotsubashi Line
- Chuo Line
- Sennichimae Line
- Sakaisuji Line
- Nagahori Tsurumi-Ryokuchi Line
- Imazatosuji Line
- New Tram Line
- Imazato Liner

Private Railway

- Hankyu Railway
- Keihan Electric Railway
- Nankai Electric Railway
- Hanshin Electric Railway
- Kintetsu Railway

- 1 2 = Available facilities. Refer to the [official website](#) for facility name
- = The gray area shows where the pass is valid for Osaka City Bus

THINGS TO NOTE:

- Lines not mentioned here are unavailable for use with Osaka Amazing Pass
- The Osaka City Bus is also available with the Osaka Amazing Pass (Except IKEA Tsuruhama shuttle bus and Universal Studios Japan™ shuttle bus)
- The route map is as of April 1, 2024

*Can be used on all Osaka Metro lines, except between Cosmo Square and Yumeshima stations. The line is due for extension in 2025.



How to Use Osaka Amazing Pass



How to ride a train



1

Click on "Show Railway QR code" and "Start using"



2

Scan the QR code at the ticket gate



3

Only one person can pass through at a time. Device holder enters last

Multiple redemptions (Train)



1

Each person is limited to one QR code



2

Swipe and scan the QR code at the ticket gate per person

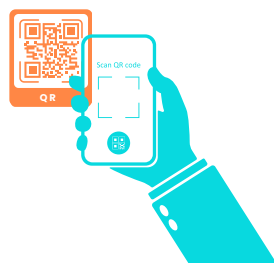


How to ride a bus



1

Click on "Scan Bus QR code", allow camera access and click on "Start using"



2

After boarding, scan the QR code inside the bus (The QR code will expire in 15 minutes)



3

Show the authorization screen to the bus driver when getting off. If it expires, please re-scan the QR code

How to enter a facility

Available Facilities



1

Click on "Scan Facility QR code", allow camera access and click on "Start using"



2

Scan the QR code at each facility



3

Show the authorization screen to the staff within 5 minutes

How to redeem special benefit



1

Click on "Special Benefit" and "Start using"



2

Show the authorization screen to the staff

Multiple redemptions (Bus, facilities and attractions)



1

Only one redemption is needed



2

Scan the QR code



3

Show the authorization screen to the staff