

# THE GALLERY GUIDE

APR–JUN 2023



LET *Art* SURPRISE YOU



Apinan Poshyananda  
*How to Explain Art to a Bangkok Cock*  
1985, remade 2019  
Painted crates and LCD monitors; Video,  
5 channels, each 4:3 format, colour and  
sound (mono), varying durations  
Image credit: Joseph Nair, Memphis  
West Pictures

#### Facing page (top to bottom):

Jean Marie Syjuco. *See Me, See You*. 1986. Painted wooden giraffe figurine and platform, mirror, stickers, light bulbs, buzzer, sound box, books, camera, television. Collection of the artist. Image courtesy of Pinaglabanan Galleries.

Sketch of proposed artwork by Shilpa Gupta. Commissioned by the National Gallery Singapore for the 6<sup>th</sup> Ng Teng Fong Roof Garden Commission.

Yeh Chi Wei. *Drummer*. c. 1965. Oil on canvas, 104.5 x 91.5 cm. © Yeh Toh Yen.

Gallery Children's Biennale 2023: Let's Make A Better Place.

Copyright in the content in this brochure may also reside in persons and entities other than, and in addition to, the Gallery. The Gallery seeks to share our artworks with as many people as we can. We are fully committed to respecting the intellectual property rights of others and always use our best efforts to obtain permission for artwork images used. Please contact us should you have any queries about this. Unless otherwise mentioned, all artwork images have been provided through the courtesy of National Heritage Board and artworks featured are National Gallery Singapore collection. The Gallery Guide is published by National Gallery Singapore. All rights reserved. Materials in this publication may not be reproduced in part or in whole without written consent of the Gallery. Every effort has been made to ensure the accuracy of information within this publication. However, changes are sometimes unavoidable and the Gallery reserves the right to make modifications to the programmes and ticketing policy without prior notice. Please visit [nationalgallery.sg](http://nationalgallery.sg) for the most updated information. The views and opinions expressed by speakers, facilitators and docents at the workshops and tours do not necessarily represent the position of the Gallery. Published in April 2023. All information is correct at time of print.

## CONTENTS

APR–JUN  
2023

12



18



22



26



- 2 About the Gallery
- 3 Director's Message
- 4 Art We Love
- 6 Your Gallery, Your Way
- 10 Highlights Calendar

### Exhibitions

- 12 Special Exhibitions
- 20 Long-Term Exhibitions

### Special Programmes

### Tours

- 30 Gallery Tours

### Activities

- 32 Performances
- 33 Talks and Workshops
- 36 Beyond the Gallery
- 38 Activity Guides
- 39 Rotunda Library & Archive

### Kids & Schools

- 40 Keppel Centre for Art Education
- 42 Kids' Programmes and Activities

### Shopping & Dining

- 44 Gallery Publications

### Visit Us

- 48 Ticketing Information
- 50 General Information
- 52 Support the Gallery

## ABOUT THE GALLERY



## UNVEILING MODERN SINGAPORE AND SOUTHEAST ASIAN ART

National Gallery Singapore is a leading visual arts institution overseeing the largest public collection of modern art of Singapore and Southeast Asia. Situated at the birthplace of modern Singapore, in the heart of the Civic District, the Gallery is housed in two national monuments—City Hall and former Supreme Court—that have been beautifully restored and transformed into this exciting 64,000 square metre venue.

Reflecting Singapore's unique heritage and geographical location, the Gallery aims to be a progressive museum that creates dialogues between the art of Singapore, Southeast Asia and the world to foster and inspire a creative and inclusive society. This is reflected in our collaborative research, education initiatives, long-term and special exhibitions, and innovative programming.

### BOARD MEMBERS

Peter Ho (Chairman)  
Chang Hwee Nee  
Chong Siak Ching  
Rosa Daniel  
Goh Kok Huat  
Maimoonah Hussain  
Shareen Khattar  
Lee Tung Jean  
Panote Sirivadhanabhakdi  
Doris Sohmen-Pao  
Professor Tan Chorh Chuan  
Whang Shang Ying  
Danny Yong



2016:  
BREAKTHROUGH CONTRIBUTION TO TOURISM  
BEST ATTRACTION EXPERIENCE  
BEST CUSTOMER SERVICE FOR ATTRACTIONS

2018:  
BEST MARKETING IDEA

2020:  
BEST LEISURE EVENT

2022:  
OUTSTANDING LEISURE EVENT  
OUTSTANDING MARKETING IDEA

## DIRECTOR'S MESSAGE

Dear friends,

Art exists in many forms, and part of the Gallery's mission is to raise awareness of and promote interest in all these forms with its exhibitions and festivals.

Discover how video installation emerged as a medium in *See Me, See You: Early Video Installation of Southeast Asia*, which opens on 5 May. The ten featured artists, all of whom were intrigued by the new media technologies of the 1980s, experimented with combinations of video, installation and performance. From their explorations came a new form of expression—video installation—which has grown to encompass an incredibly expansive field of artistic production.

Challenging the definition of its form in a similar fashion is the 6<sup>th</sup> Ng Teng Feng Roof Garden Commission. *Untitled* by Shilpa Gupta is a large-scale sculpture made of an inflatable material. Soft, malleable and responsive to its environment, *Untitled* subverts our expectations of monumental sculpture, which is often seen as unchanging and immovable.

Even forms with long-standing traditions have immense untapped potential. See familiar mediums with fresh eyes in *Living Pictures: Photography in Southeast Asia*, which traces the evolution of photography in the region, and in *Liu Kuo-sung: Experimentation as Method*, which examines the new materials and techniques invented by a modern ink master.

Meanwhile, the young and young at heart can look forward to our latest edition of the Gallery Children's Biennale, themed "Let's Make A Better Place," opening on 27 May. With artworks, interactive installations and programmes created for, with and by children, the Biennale aims to provide a warm and welcoming space for children and adults to have conversations on making the world a better place.

The Gallery Wellness Festival returns this year with a focus on connecting with oneself and others through art from our collection. Visitors can enjoy a range of wellness-oriented art programmes, including more than 20 unique experiences designed to improve emotional and mental health within and beyond the walls of the Gallery.

With an exciting slate of activities in the coming months, we hope that visitors continue to be surprised by the diversity of art and look forward to discovering more at the Gallery.

**Eugene Tan**  
Director, National Gallery Singapore





Simryn Gill. *32 Volumes*. 2006. Complete series of LIFE World Library (New York: Time Inc., 1961–1970) with text erased, gesso. 20.4 × 7.8 × 1.2 cm each. Collection of Phillip Keir. Installation view, *Living Pictures: Photography in Southeast Asia*, 2022. Image credit: Joseph Nair, Memphis West Pictures.

Born in Singapore, Simryn Gill (b. 1959) grew up in Malaysia, was educated in India and the UK, and now divides her time between Port Dickson, Malaysia and Sydney, Australia. She is a meticulous collector of things, from books to discarded ephemera. Her practice, which spans three decades, examines how our experience of the present is influenced by both our personal and cultural histories through objects, texts and photographs.

In Gill's *32 Volumes*, copies of the LIFE World Library anthology are stripped bare of their textual content by hand. The original titles and images on the hardcovers are painted over in gesso, while the ink from the printed text on the inside pages has been meticulously sandpapered away. By omitting all captions and context, Gill removes—or, for those among us who are inclined to read first and look second, introduces—an obstacle in perusing the work. The work presents documentary photography in its most rudimentary form and demonstrates the ambiguity that lurks behind every photograph.

Our friendly staff are available to assist visitors with flipping the pages of the books every Friday to Sunday, from noon to 4pm.

*32 Volumes* is featured in the exhibition *Living Pictures: Photography in Southeast Asia*, located in the City Hall Wing, Level 3, Singtel Special Exhibition Gallery.

# YOUR GALLERY, YOUR WAY



## NEED HELP PLANNING YOUR VISIT?

If you are looking for an itinerary to guide your visit, there are several curated Art Journeys to choose from. Whether you are visiting the Gallery for the first time, planning a romantic date or even just here for the 'gram, there is always something for everyone! The Art Journeys function can be synced with our new digital touchpoints like the Activity Cube and Self-Service Kiosks. If you find an activity that piques your interest, simply scan the corresponding QR code to add it into your journey. Navigating around the Gallery has never been easier!

Complementing the various new touchpoints at the Gallery, the Gallery Explorer mobile app (iOS & Android) remains available for visitors to build a deeper relationship with art. Listen to audio tours, adopt an artwork or play art games through the app!

## CHECK OUT OUR CURATED ART JOURNEYS



### TAKE A TOUR OF THE GALLERY'S MUST-SEE ARTWORKS!

If it's your first time at the Gallery,  
use this Art Journey to dive into the  
must-see artworks and exhibitions.



SCAN TO TRY



### LEARN HOW ART CAN BE A FORM OF THERAPY!

It's easy to feel overwhelmed.  
We invite you to take a step back and  
enjoy idyllic artworks and quiet spaces  
on this Art Journey.



SCAN TO TRY



### TAKE A TOUR OF LOCAL ARTWORKS

Explore paintings and sculptures  
by local artists as well as the  
Rotunda Library & Archive, a gateway  
to the Gallery's extensive collection  
of materials on the art of Singapore  
and Southeast Asia.



SCAN TO TRY



### STRAPPED FOR TIME?

If you only have an hour to spare,  
this Art Journey is for you!  
Recharge with the Gallery's  
iconic works and spaces.



SCAN TO TRY



### BRING ALONG YOUR CAMERAS!

It's time to refresh your feed  
with the most aesthetic spots  
in the Gallery.



SCAN TO TRY

# YOUR GALLERY, YOUR WAY

## BROWSE & PLAN YOUR VISIT ANYWHERE!



Arrival Landmark

For ultimate flexibility, you can now search for what's on at the Gallery, plan and pay for your visit wherever you are. Plan your visit and purchase your passes before stepping into the building or choose from a range of self-service options on arrival at any of our entrances.

Upon arrival at our main Coleman Entrance, you will be greeted by our Arrival Landmarks that introduce our latest exhibitions and programmes. Scan the respective QR codes to get passes and quick-start your visit.



Use our Self-Service Kiosks located around the building to select or curate your own Art Journey, and print your Gallery Passes on the spot!

Unsure of what to do at the Gallery? Look for inspiration at our new Activity Cube.

If you see something you like, simply add them to your personal Art Journey on your mobile device by scanning the activity's QR Code.

NEED  
MORE  
HELP ?

USE OUR  
ACTIVITY  
CUBE.



## FREE AND EASY ART ENCOUNTERS

Artist Joseph Beuys famously said: "Everything is art: every aspect of life can be approached creatively and, as a result, everyone has the potential to be an artist." Inspired by this theory of Social Sculpture, the Gallery has re-designed the basement concourse to bring out the creative spirit in everyone! The entire basement concourse is free for all visitors, including non-Singaporeans, to enjoy.



The Spine Hall



Dinh Q. Lê. *Voices from the Centers*. 2021. Mixed media – Plywood, prints on vinyl, computers, camera, microphones, paper and found media images. Created for Gallery Children's Biennale 2021: Why Art Matters.

Start off your art journey with multi-disciplinary and multi-generational exhibitions and programmes at The Spine Hall, The Imagination Gallery, The Ngee Ann Kongsi Concourse Gallery and Koh Seow Chuan Galleries or check out innovative, tech-enabled art experiences at the Y-Lab Art Tech Showcase and Work Space.


The Spine Hall, located within the basement concourse at the City Hall Wing, features large-scale artworks and programmes.

Explore art installations from the Gallery Children's Biennale at The Imagination Gallery in the Supreme Court Wing. The artworks and programmes in these spaces will be refreshed on a regular basis to let art inspire you.



# HIGHLIGHTS CALENDAR

For the latest updates on exhibitions and programmes, please visit [nationalgallery.sg](http://nationalgallery.sg).

 Digital Experiences included  
[nationalgallery.sg/galleryanywhere](http://nationalgallery.sg/galleryanywhere)

## APR

### ONGOING

#### SPECIAL EXHIBITION (p.14)

*Living Pictures:  
Photography in Southeast Asia*

Installation view,  
*Living Pictures: Photography in Southeast Asia*, 2022.  
Image credit: Joseph Nair, Memphis West Pictures.

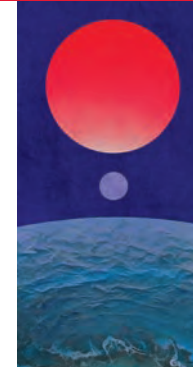


### ONGOING

#### SPECIAL EXHIBITION (p.16)

*Liu Kuo-sung:  
Experimentation as Method*

Liu Kuo-sung, *The Composition of  
Distance no. 15*, 1971.  
Ink and colour on paper, 111.5 × 57.5 cm.  
Gift of The Liu Kuo-sung Foundation.



### WORKSHOP

(p.33)

Online  
Courses on  
Southeast  
Asian Art



Screen capture from videos featured in  
inaugural course, "As We See It: Visual Analysis  
Through Southeast Asian Art"

## MAY

### OPENING

5 FRI

#### SPECIAL EXHIBITION

(p.12)

*See Me, See You:  
Early Video Installation  
of Southeast Asia*

Apinan Poshyananda. Detail of *How to Explain Art to a Bangkok Cock*, 1985, remade  
2019. Painted crates and LCD monitors; Video, 5 channels, each 4:3 format, colour and  
sound (mono), varying durations. Image credit: Joseph Nair, Memphis West Pictures.

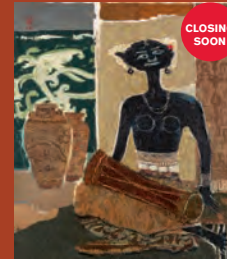


### CLOSING

14 SUN

#### LONG-TERM EXHIBITION (p.22)

*Familiar Others:  
Emiria Sunassa,  
Eduardo Masferré  
and Yeh Chi Wei,  
1940s–1970s*



Yeh Chi Wei, *Drummer*, c. 1965.  
Oil on canvas, 104.5 × 91.5 cm.  
© Yeh Toh Yen

### OPENING

27 SAT

#### SPECIAL PROGRAMME (p.26)

Gallery  
Children's Biennale  
2023:  
Let's Make  
A Better Place



## JUN

### OPENING

#### SPECIAL EXHIBITION (p.18)

Ng Teng Fong  
Roof Garden Commission:  
Shilpa Gupta

Sketch of proposed artwork by Shilpa Gupta.  
Commissioned by the National  
Gallery Singapore for the 6<sup>th</sup> Ng Teng Fong  
Roof Garden Commission.



### OPENING

17 SAT

#### SPECIAL PROGRAMME (p.28)

Gallery  
Wellness  
Festival 2023:  
Art Connects



### PERFORMANCE (p.32)

*Resonates  
With Residency*  
by Sigma  
Contemporary Dance



## SEE ME, SEE YOU: EARLY VIDEO INSTALLATION OF SOUTHEAST ASIA

Opening 5 May | City Hall Wing, Level B1, The Ngee Ann Kongsi Concourse Gallery



Jean Marie Syjuco. *See Me, See You*. 1986. Painted wooden giraffe figurine and platform, mirror, stickers, light bulbs, buzzer, sound box, books, video camera, television. Collection of the artist. Image courtesy of Pinaglabanan Galleries.

By staging and recreating seminal works by ten artists, *See Me, See You: Early Video Installation of Southeast Asia* locates the moment when the form first emerged in the region in the 1980s and 1990s. Driven by their curiosity towards novel mass-consumed technology as well as an urge to break away from the conventions of painting and sculpture, these artists turned to installation and performance, applying them in myriad combinations with the moving image. Video installation culminated from this interdisciplinarity and experimental impulse.

Before the emergence of modern projection screens, video installation relied heavily on an old-school technological behemoth: the cathode-ray tube television. The first iterations of video installation were imposing sculptural objects, which encroached into the viewer's space. From its nascent years until today, video installation unveiled modes of affecting audiences through layered spatial and temporal experiences, gaining ground as a medium that is now a staple of contemporary art.



Baharudin Mohd Arus  
*The Medium is the Message*  
(after Marshall McLuhan)  
1989  
Fish trap, stainless steel, red light, video camera, tripod, windshield wiper switch, motors, poles, reflective plates, battery, chains, lawnmower base, motor sprockets, CRT televisions and video  
Collection of the artist  
© Dr Baharudin Mohd Arus.

The exhibition takes place in two parts. The first part, opening on 5 May, features works by Apinan Poshyananda, Baharudin Mohd Arus, Chng Nai Wee, Johnny Manahan and Jean Marie Syjuco.

For more details, please visit [nationalgallery.sg/SeeMeSeeYou](http://nationalgallery.sg/SeeMeSeeYou).



# SPECIAL EXHIBITIONS

## LIVING PICTURES: PHOTOGRAPHY IN SOUTHEAST ASIA

Ongoing | City Hall Wing, Level 3, Singtel Special Exhibition Gallery



Dinh Q. Lê. Detail of *Crossing the Farther Shore*. 2014. Found photographs, cotton thread, linen tape, steel rods, dimensions variable. Installation view, *Living Pictures: Photography in Southeast Asia*, 2022. Image credit: Joseph Nair, Memphis West Pictures.

Photographs surround us every day and everywhere. They shape the way we see the world and the way we see ourselves. Explore the changing roles of photography in Southeast Asia—from its beginnings as a tool of European exploration to the “performance” of studio portraits; from the incomplete realities of war to the rise of fine art; and finally to the memes and selfies that saturate social media today.

Discover the power of photography in *Living Pictures: Photography in Southeast Asia*.

Lead Partner



Installation views, *Living Pictures: Photography in Southeast Asia*, 2022. Image credits: Joseph Nair, Memphis West Pictures.

# SPECIAL EXHIBITIONS

## LIU KUO-SUNG: EXPERIMENTATION AS METHOD

Ongoing | City Hall Wing, Level 4, Level 4 Gallery and Wu Guanzhong Gallery



Detail of Liu Kuo-sung paper. Image credits: Joseph Nair, Memphis West Pictures.

*Liu Kuo-sung: Experimentation as Method* is the largest exhibition by a Singapore public museum dedicated to the Chinese ink master, Liu Kuo-sung, which celebrates his artistic career spanning 70 years.

This retrospective show traces Liu's creative evolution through more than 60 paintings and 150 items from the artist's personal archive, highlighting his significant innovations and contributions to the development of modern Chinese ink painting. His experiments in art go beyond the brush; Liu explores different materials and textures, and even invented "Liu Kuo-sung paper." He continuously reconstructs tradition with the modern, enabling the creation of a new approach to the time-honoured practice of Chinese ink painting.



Installation views, *Liu Kuo-Sung: Experimentation as Method*, 2023. Image credits: Joseph Nair, Memphis West Pictures.



### NG TENG FONG ROOF GARDEN COMMISSION: SHILPA GUPTA, UNTITLED (2022)

Opening June | Ng Teng Fong Roof Garden Gallery | Free



In *Untitled*, two bodies are seen interlocked in a combative position. However, upon going around the work, one realises that they are in fact perched on a single head. The two bodies can be read from the perspective of geopolitical conflicts and social struggles or the dualities that we experience within our own selves in everyday life. Constructed as a large-scale inflatable on an elevated site at the Gallery, *Untitled* responds to a space surrounded by the visual and historical density of a large metropolis, echoing the manufactured and dissonant realities of global cities. The multiplicity of meanings, the inversion of the figures and the malleability of the material used for the inflatable all subvert the conventions associated with the grandeur of traditional monumental figurative sculpture.

By using an inflatable medium, the work invites visitors to approach it in a more playful and exploratory manner. This non-traditional approach to art-making opens up new possibilities for engagement and interaction with diverse communities, creating opportunities for unexpected and meaningful encounters.



Sketch of proposed artwork by Shilpa Gupta.  
Commissioned by the National Gallery Singapore for the 6<sup>th</sup> Ng Teng Fong Roof Garden Commission.

Series Partner



The Ng Teng Fong Roof Garden Gallery is made possible  
with the support of Far East Organization.

## LONG-TERM EXHIBITIONS

### SIAPA NAMA KAMU? ART IN SINGAPORE SINCE THE 19<sup>TH</sup> CENTURY

Ongoing | City Hall Wing, Level 2, DBS Singapore Gallery



Georgette Chen  
(张嘉英)  
*Hakka Family*  
1939  
Oil on canvas,  
162 x 130 cm  
Anonymous Gift

*Hakka Family* is one of Georgette Chen's most significant works due to its impressive scale and reflection of Chen's artistic philosophy that the purpose of art is to elevate everyday subjects. Painted while Chen was in Hong Kong, she applied the techniques that she had honed as a student in Paris in the 1920s to depict the people in and context of her surroundings—something that she would continue to develop after her move to Malaya in 1951.

On display in DBS Singapore Gallery 1.

The DBS Singapore Gallery is made possible with the support of DBS Bank.

### BETWEEN DECLARATIONS & DREAMS: ART OF SOUTHEAST ASIA SINCE THE 19<sup>TH</sup> CENTURY

Ongoing | Supreme Court Wing, Levels 3–5, UOB Southeast Asia Gallery



F.X. Harsono  
*What Would You Do If  
These Crackers Were Real  
Pistols?*  
1977–2019  
Crackers, table, chair,  
instructions and notebook,  
dimensions variable

F.X. Harsono was a key figure in Indonesia's New Art Movement, a group that emerged in 1975 and sought change through new art forms and contemporary practices. He created this work in 1977 as a political statement against Indonesia's then-President Suharto's authoritarian New Order regime. Harsono provokes the viewer to consider the infiltration of violence into everyday life with a simple question: What would you do if these crackers were real pistols?

On display in UOB Southeast Asia Gallery 11.



In this painting, a familiar urban scene appears streamlined and modern. The shapes of two ships and the silhouettes of workers are simplified such that the image appears to be almost abstract. It was painted by Lai Foong Moi, the first graduate from Singapore's Nanyang Academy of Fine Arts (NAFA) to study in Paris, where she also exhibited in salon exhibitions.

On display in UOB Southeast Asia Gallery 7.

Lai Foong Moi  
*Ship*  
1960  
Oil on canvas,  
81.5 x 65 cm

The UOB Southeast Asia Gallery is made possible with the support of UOB.



# LONG-TERM EXHIBITIONS

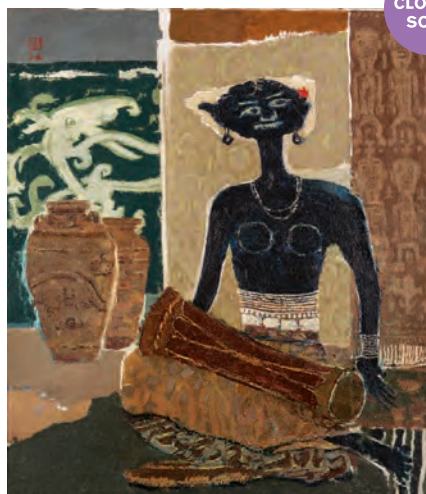
## FAMILIAR OTHERS: EMIRIA SUNASSA, EDUARDO MASFERRÉ AND YEH CHI WEI, 1940s–1970s

Closing 14 May |  
Supreme Court Wing, Level 3,  
UOB Southeast Asia Gallery,  
Dalam Southeast Asia

Who is “the Other”? What does it mean to represent peoples who are different from one’s own?

*Familiar Others* explores these issues through the works of three Southeast Asian modern artists. Emiria Sunassa (1894–1964) painted images of peoples from throughout the Indonesian archipelago but had a special interest in Papua. Eduardo Masferré (1909–1995) photographed the peoples of the Cordillera region of the Philippines, where he spent his life. Yeh Chi Wei (1913–1991) travelled throughout Southeast Asia but was especially inspired by the Indigenous peoples of Sarawak and Sabah.

To open up a discussion about the contemporary implications of these works, this exhibition includes commissioned responses from artists, writers, musicians and scholars who have community ties to the people represented in the artworks.



Yeh Chi Wei. *Drummer*. c. 1965.  
Oil on canvas, 104.5 × 91.5 cm. © Yeh Toh Yen

CLOSING  
SOON

## UNREALISED

Ongoing | Accessible only via the Gallery Explorer app



*unrealised* is a virtual experience developed in dialogue with three artists—Heman Chong, Ho Tzu Nyen and Erika Tan. It tests the potential of the digital image within the physical spaces of the Gallery’s long-term displays. To access *unrealised*, please download the Gallery Explorer app from the App Store and Google Play store.

For more information, please visit [nationalgallery.sg/unrealised](https://nationalgallery.sg/unrealised).

Dalam Southeast Asia is an experimental project space located within the UOB Southeast Asia Gallery. Projects presented here ask critical questions and explore lesser-known narratives in Southeast Asian art while rethinking what a collections-based display is and what it may seek to achieve.

The UOB Southeast Asia Gallery is made possible with the support of UOB.



SCAN TO DOWNLOAD APP

Please note earphones are required to experience *unrealised*.

# LONG-TERM EXHIBITIONS

## OUTBOUND

Ongoing | Various locations

[nationalgallery.sg/outbound](https://nationalgallery.sg/outbound)

[Instagram icon](https://www.instagram.com/outboundsg) #outboundsg



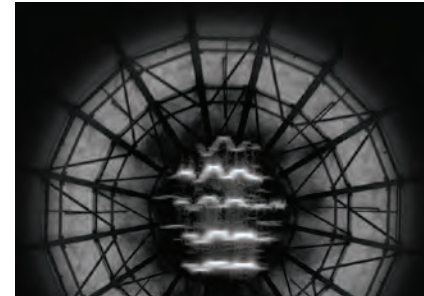
Gary Carsley (b. 1957, Australia) with Jeremy Chu (b. 1973, Singapore) at their co-created installation *The Regency Made Me Blind* (2018), an OUTBOUND commission by National Gallery Singapore. Laser print on photocopier paper, latex print on self-adhesive vinyl, UV print on backlit film rendered as mechanised roller blinds, UV laminated C-print applied to IKEA Gilbert chair.

This stairway “garden” is made with digitally composited photographs of botanical gardens in Hanoi, Manila, Bogor, Kuala Lumpur and Singapore, all of which have colonial origins. Bands of colours mimicking Regency-era stripes were later superimposed on the images. These were then printed on roller blinds, self-adhesive vinyl and more than 5,000 sheets of coloured A4 photocopier paper, which the artists reverently applied to the walls. This meditative labour is inspired by the meticulous gold leafing of the interiors of sacred places and is also evoked by the Tibetan Buddhist mantras on the walls, which symbolically cleanse passing visitors of negative karma.

OUTBOUND is a series of unique commissions that imaginatively transforms transitional spaces at the Gallery. Each commission is an artistic and temporal landmark that anchors and guides the visitor's experience while highlighting the Gallery's iconic architecture. The inaugural season presents projects from artists Gary Carsley (Australia), Jeremy Chu (Singapore), Jane Lee (Singapore), Haegue Yang (South Korea) and Yee I-Lann (Malaysia).

## LISTENING TO ARCHITECTURE: THE GALLERY'S HISTORIES AND TRANSFORMATIONS

Ongoing | City Hall Wing, Level 4, ArchiGallery



Zai Tang. *Resident Frequencies: A Brief Aural History of National Gallery Singapore*. 2017. Eight-channel sound installation, 36 min. Commissioned by National Gallery Singapore. Image courtesy of the artist.

The architecture of the City Hall and former Supreme Court buildings may be imagined as an ongoing conversation between different generations across time. The inaugural exhibition at the ArchiGallery offers insights into the enduring histories and architectural designs of the two national monuments and their dramatic transformations into a home for Southeast Asian art. It also features never-before-seen artefacts excavated from the Gallery's grounds, and a commissioned sonic artwork by artist Zai Tang, which draws on the historical, social and spatial memories created in the buildings.

## LAW OF THE LAND: HIGHLIGHTS OF SINGAPORE'S CONSTITUTIONAL DOCUMENTS

Ongoing | Supreme Court Wing, Level 3, Chief Justice's Chamber & Office



### Third Charter of Justice, 1855

This document affirmed the reception of English law in Singapore and provided the settlement with its own professional judge (then known as a Recorder).

Organised by the National Archives of Singapore (NAS) and the National Library Board (NLB), this exhibition explores the history of Singapore's constitutional development from a British settlement in 1819 to its emergence as a sovereign republic in 1965. It presents a selection of 23 rare documents from the NAS and NLB's collections, each capturing a key moment in Singapore's legal history and journey to independence.





## SPECIAL PROGRAMMES



NEW

Special  
Programmes

OPENING 27 MAY

CHILDRENSBIENNALE.COM

WWW.

With the theme of "Let's Make A Better Place", the Gallery Children's Biennale 2023 aims to allow children to discover a world that they can create for themselves as they grow to understand not only their own thoughts, feelings, motives and desires, but that of others as well.

Centred on art created for, with and by children, the Biennale is a warm and welcoming space for children and adults alike to have conversations about their dreams, ideas, struggles and other concerns.

Through interactive installations and programmes, children will encounter the Biennale's core values—Care, Collaborate, Respect and Imagine—and learn to translate them into skills to help them build a better place for everyone.

# Gallery wellness festival

Opening 17 Jun

Following the success of its inaugural edition, the Gallery Wellness Festival returns this year with a focus on connecting with oneself and others through art from the Gallery's Collection.

The festival, with the theme of "Art Connects," features more than 20 unique wellness experiences. Enjoy a range of free activities and participate in art and music therapy experiential workshops, mindful art walks and many other art-inspired wellness programmes. These programmes are developed through collaborations with partners in other industries, providing opportunities for participation beyond the walls of the Gallery.

The second edition of the festival will run from 17 June to 9 July 2023.



Practicing mindfulness among masterpieces in the Gallery through meditation exercises from Chinese Qigong.



# GALLERY TOURS

## DAILY TOURS

Explore the rich history of our buildings and collections by joining one of our guided tours led by trained docents.

To reserve a slot, register online or proceed to Visitor Services at Padang Atrium Level 1 at least 30 minutes before the tour starts. Limited slots are available on a first-come, first-served basis. Tour participants should purchase a Pass before joining a tour with the exception of Building Highlights Tour, which does not require any passes.

### BUILDING HIGHLIGHTS—FREE!

English Thu–Sun 11am |  
Mandarin Sat–Sun 11.30am

### HIGHLIGHTS OF THE GALLERY

English Mon–Sun 10.30am |  
Mandarin Sat–Sun 4pm |  
Japanese 1<sup>st</sup> & 3<sup>rd</sup> Thu 1.30pm

### DBS SINGAPORE GALLERY HIGHLIGHTS

English Thu–Sun 1pm |  
Mandarin Sat–Sun noon

## CURATOR TOURS

Deep dive into key artworks, curatorial narratives and behind-the-scenes stories in these tours led by exhibition curators.

### SEE ME, SEE YOU: EARLY VIDEO INSTALLATION OF SOUTHEAST ASIA

Sun 21 May, 11am | Sat 10 Jun, 2pm |  
City Hall Wing, Level B1,  
The Ngee Ann Kongsi Concourse Gallery |  
Free, registration required

## GROUP TOURS

### COMMUNITY GROUPS

The Gallery offers guided tours for community groups at a concessionary rate. For more information, please email [grouperquiries@nationalgallery.sg](mailto:grouperquiries@nationalgallery.sg).

### UOB SOUTHEAST ASIA

#### GALLERY HIGHLIGHTS

English Thu–Sun 3.30pm |  
Mandarin Sat–Sun 3pm

### HIGHLIGHTS OF LIU KUO-SUNG: EXPERIMENTATION AS METHOD

English Thu–Sun 11.30am |  
Mandarin Sat–Sun 2pm

### HIGHLIGHTS OF

#### LIVING PICTURES: PHOTOGRAPHY IN SOUTHEAST ASIA

English Thu–Sun 2pm |  
Mandarin Sat–Sun 1.30pm

### LIVING PICTURES: PHOTOGRAPHY IN SOUTHEAST ASIA

Sat 10 Jun, 11am | City Hall Wing,  
Level 3, Singtel Special Exhibition  
Gallery 3 | Free, registration required

### CORPORATE OR OTHER PRIVATE GROUPS

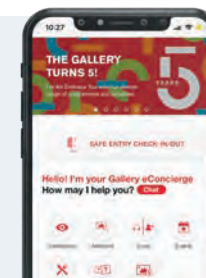
Please email [grouperquiries@nationalgallery.sg](mailto:grouperquiries@nationalgallery.sg) for more information.

## SELF-GUIDED AUDIO TOURS

Download our free Gallery Explorer app to enjoy rich audio commentary on our long-term and special exhibitions.



SCAN TO DOWNLOAD  
GALLERY EXPLORER APP



## ART x COCKTAILS TOUR

Wed 4.30pm | Sat 4.30pm | Sun 6pm | \$45 per ticket, limited slots | Tour ticket includes General Admission

Add a touch of culture to happy hour with the perfect pairing of art and cocktails at the Gallery! Go on a 60-minute docent-led tour to discover the artworks that inspired craft cocktails from Smoke & Mirrors and learn about the evolution of cocktails throughout history.

**Note:** The tour is not suitable for visitors below the age of 18. Tour ticket comes with one (1) complimentary cocktail from "The Real Art of Drinking" menu at Smoke & Mirrors, or a mocktail if desired. Tables at Smoke & Mirrors are reserved for 1 hour only. Please make a separate reservation directly with Smoke & Mirrors if you wish to stay for a longer duration. Tables will be released if unoccupied for 15min after the tour ends at Smoke & Mirrors. Smoke & Mirrors reserves the right to turn away guests who do not comply with the dress code (strictly no slippers and flip flops). Only those aged 18 and above may enter the bar after 7pm.



## BACK-OF-HOUSE TOURS

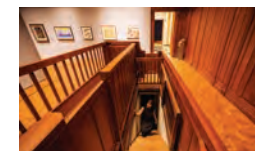
### FORMER SUPREME COURT: UNSEEN, UNHEARD

Sat–Sun 2.30pm, 4.30pm | \$15 per ticket, limited slots | General Admission Pass is required, to be purchased separately | 20% off for Gallery Insiders

This tour offers a glimpse into restricted areas of the former Supreme Court, usually out of bounds to the public. Go behind the scenes and find out more about courtroom proceedings and the experience of persons on trial as you:

- Traverse a network of hidden passageways
- Climb through a trapdoor into a prisoner's dock
- Gain access to the Viewing Gallery where members of the public used to sit during court hearings
- Discover stories of some of the highest profile cases in Singapore's history since 1939, tried in these very courtrooms

**Note:** The tour is not suitable for children below the age of 13 and visitors with limited mobility. Please wear comfortable footwear and attire. Wearing high heels is strongly not recommended due to safety reasons. Gallery Insiders can show their e-card to enjoy 20% discount when booking their tickets at the counter.



## PERFORMANCES

### RESONATES WITH RESIDENCY

#### BODY HISTORY BY SIGMA CONTEMPORARY DANCE



Image credit: Bernie Ng.

Sigma Contemporary Dance presents *Body History*, a multi-programme responding to the exhibitions *Living Pictures: Photography in Southeast Asia* and *Siapa Nama Kamu? Art in Singapore since the 19<sup>th</sup> Century*. Through a series of performances and workshops, Sigma will explore the use of the body as a tool to capture memories and experiences, as well as the intricacy of movement as a way to preserve and express our inconstant identities.

#### ABOUT RESONATES WITH RESIDENCY

The Resonates With Residency is a three-month programme that invites local artists to respond to works and themes from the Gallery's long-term and special exhibitions. Each Resident Artist will explore a theme—inspired by an ongoing exhibition—through a series of performances, public workshops and online content. With interdisciplinary, intercultural and international collaboration at its core, the Resonates With Residency aims to establish deep and meaningful connections between artists, audiences and art from Singapore and the region.



FOR MORE  
INFORMATION ON  
THE RESIDENCY,  
PLEASE SCAN  
THIS QR CODE.

For all other performances,  
please find further details by scanning the QR code here.



## TALKS & WORKSHOPS



Anne F. Rothenberg Professor of the Humanities at Harvard University, Homi K. Bhabha, spoke at the inaugural lecture of the Reframing Art Histories: Distinguished Scholars Series, 14 January 2023.

Discover a diverse range of perspectives on art and culture from artists, thinkers, cultural workers and more with our line-up of online and onsite programmes. Keep up to date on what's happening at the Gallery through our website and check out our past programmes on the Gallery's YouTube channel.



SCAN TO VIEW  
THE GALLERY'S  
YOUTUBE CHANNEL





## OH CHAI HOO: A WALK THROUGH BUKIT TIMAH NATURE RESERVE

In this audio trail, venture through Bukit Timah Nature Reserve and unearth its historical narratives with artist Oh Chai Hoo, who is well known for his ink experiments and multidisciplinary practice. Discover the imperfect beauty of nature as you traverse through areas such as Hindhede Quarry and Dairy Farm Nature Park with Oh, and reconsider the idea of a landscape.



## PODCAST: NO FLASH

Welcome to our official unofficial podcast, *NO FLASH*. These are impossible interviews, tall tales and the strangest stories never told. This is the Gallery like you've never heard it. Season 1, *Unstill Life*, is available now on your favourite podcast platforms.



## PODCAST: THE PADANG SESSIONS

Join us as we chart the art of Southeast Asia and beyond, one dialogue at a time. Follow *The Padang Sessions* on your favourite podcast platforms to access our audio archive of lectures, panels and conversations recorded live in the Gallery, whenever and wherever you are.

Scan the QR code here to listen to the podcast series of your choice!



Screen capture from videos featured in inaugural course, "As We See It: Visual Analysis Through Southeast Asian Art".

## ONLINE COURSES ON SOUTHEAST ASIAN ART

Discover Southeast Asian art and artists through National Gallery Singapore's new public online courses. Access the world's largest collection of Singapore and Southeast Asian modern art through bite-sized videos, readings, quizzes and more. Be part of a global community of art enthusiasts and grow your understanding of Southeast Asian art histories. Our first course, focused on visual analysis, is available for free.

Start your journey now at [courses.nationalgallery.sg](https://courses.nationalgallery.sg).



Want to learn more about the artworks in the National Collection? Start a conversation with us today on Facebook Messenger, Telegram and WhatsApp and discover the unexpected ways you can relate to Southeast Asian artists and their works.

Start your journey here: [linktr.ee/nationalgallerybot](https://linktr.ee/nationalgallerybot).



TEXT ME ART

# BEYOND THE GALLERY



Public experiencing the Gallery's collection in different ways beyond our walls.

The Gallery aims to increase public awareness of and interest in art through accessible touchpoints, as well as deepen audience engagement through partnerships that extend beyond our walls.

Gallery Outreach engages publics in co-creating content for our various on-site, off-site and online exhibitions and programmes with a participatory approach and interdisciplinary formats that support their learning interests.

Explore a pop-up event near you!

## TRY OUT THE MINI-GAME

Bored at home? Refresh your memory of the Gallery's Collection through eight digital games.

Take a screenshot of your completed game to redeem an Amazing Sketchbook at the Gallery's Keppel Centre for Art Education.



## GALLERY GOES TO...

### LIBRARIES

Stories and art come alive through our partnership with the National Library Board. Explore the Gallery's Collection in fun and interactive ways with our Travelling Art Carts and learn more using learning resources co-developed with the National Library Board on LearnX Arts.

#### Travelling Art Carts can be found at:

- Clementi Public Library
- Seng Kang Public Library
- Toa Payoh Public Library
- Yishun Public Library

To find out more, please visit [learning.nlb.gov.sg](http://learning.nlb.gov.sg).



Children captivated by stories based on the artwork *Life by the River* told by storyteller Mabel at library@habourfront.

### PARKS

Spot the Roving Art Truck and Travelling Art Carts in parks around Singapore and see the Gallery's Collection in a different setting.

- **Gardeners' Day Out at HortPark HortCentre, Lower level outside Multi-purpose Hall**  
Sat 20 May, 17 Jun | 9am–3pm

- **Gardens by the Bay**  
June 2023

The Roving Art Truck is made possible with the support of Applied Materials.

### NEIGHBOURHOODS

Learn about art through fun art activities facilitated by the Gallery's artist-educators at a place near you.



Roving Art Truck at Gardens by the Bay.



## ACTIVITY GUIDES

*Art with You* is an evidence-based museum programme developed by National Gallery Singapore in partnership with Dementia Singapore, which aims to foster positive and meaningful engagement that supports the well-being of caregivers and persons with dementia. *Art with You* combines person-centred care with arts engagement to create an inclusive environment where persons with dementia are valued, respected and empowered.

For self-guided visits, caregivers may collect the *Art with You* Caregiver's Guide at the Level 1 Visitor Services counter or the Basement 1 Information Counter. The Art Kit containing art-making materials is available at the Level 1 Keppel Centre for Art Education reception counters. For enquiries, please contact [community@nationalgallery.sg](mailto:community@nationalgallery.sg).



NEW

FREE



### HOW TO ART WITH FRIENDS

Available at Visitor Services Counter

*How To Art With Friends* takes you on a quirky adventure around the Gallery, on your own terms and in your own time! Have a blast with with ten fun activities that guide you to look at artworks in an unexpected and personal way.

From creating music playlists and taking expressive portraits of your friends to writing simple poetry, engage with visual art through shared experiences.

This is the perfect museum companion for anyone looking to creatively connect with themselves and others!

FREE



### THE HONEST GUIDE TO SEEING ART #1 AND #2

Available at Visitor Services Counter

Packed with questions you have always wanted to ask in a gallery but just never did. *The Honest Guide* series is written by regular people to help other regular people navigate the murky depths of art appreciation.

## ROTUNDA LIBRARY & ARCHIVE



Image credit: Joseph Nair, Memphis West Pictures.

Situated in the heart of the former Supreme Court, where the legal reference library was once located, the Rotunda Library & Archive offers visitors a gateway to the Gallery's extensive collection of reference and archival materials focusing on 19<sup>th</sup>- to 20<sup>th</sup>-century art of Singapore and Southeast Asia, and provides a welcoming environment for reading and research.

The Library & Archive collection consists of approximately 20,000 archival and nearly 10,000 reference materials. Of these, the archives consist of artists' primary resources such as letters, writings, interviews, recordings of performances, sketches and drawings, as well as press clippings and other exhibition-related ephemera. The resources continue to grow thanks to the generous support of artists and their families, collectors and other collaborators.

For assistance or enquiries, please email [library.archive@nationalgallery.sg](mailto:library.archive@nationalgallery.sg).

You may also access a large selection of resources from our artwork and Library & Archive collections on our Collections Search Portal at [collections.nationalgallery.sg](https://collections.nationalgallery.sg).

### OPERATING HOURS:

Mon–Fri 10am–12.30pm, 2–5pm

Closed on weekends and public holidays

*\*The hours may change in accordance with the Government's latest COVID-19 advisory. Please check the Gallery's website and social media for latest information.*



ACCESS  
ARTWORKS, LIBRARY  
AND ARCHIVAL  
MATERIALS ON OUR  
SEARCH PORTAL

# GALLERY Kids!



The Keppel Centre for Art Education is a dynamic space where art inspires new ways of learning. Come experience the immersive spaces that encourage imagination, creativity and self-led exploration. The Centre also provides a lively line-up of programmes for youth, children and families all year round.

Located on Level 1 of the City Hall Wing, the Keppel Centre is easily accessible to schools and families with young children. Admission is free.



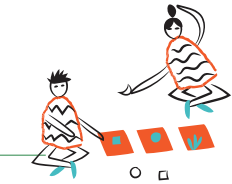
## 5+ YEARS ART IN EVERY CORNER!

Immerse yourself in *Mural Play!* and hands-on activities inspired by the Gallery's artworks and fuel your creativity! Imagine if the artworks came alive and started roaming freely about our Gallery. Play detective and help us find our artworks or create new compositions with magnetic elements as a storyteller!



## 3+ YEARS BECAUSE IT MAKES ME FEEL

Home is a relationship between people, a feeling of belonging. Artist Nandita Mukand invites you to imagine different worlds, discover different homes and explore what gives you a sense of belonging.



## 4+ YEARS INK STUDIO

What are some tools used by Singapore artist Yeo Shih Yun to create her abstract ink paintings? Can you use colourful materials to create simple but energetic lines and shapes? Children are invited to express their creativity as they explore each station, guided by prompts that make you look at art in a different way.



## 4+ YEARS MY INK-CREDIBLE ADVENTURE

Run across the padded floor, clap your hands as loud as you can or move your arms in each zone! What will happen next? Surrounded by swirling brushstrokes created by artist Yeo Shih Yun, revel in the energy of ink splatters in this lively space as you embark on your own Ink-credible Adventure!



For more information, please visit [nationalgallery.sg/gallerykids](http://nationalgallery.sg/gallerykids).

**Besides exploring the spaces, here are three tips to engage your child at the Keppel Centre:**

- Play "I Spy" to enhance their observation skills. Take turns to identify shapes, colours and interesting objects in the Centre.
- Enjoy a book together at the Art Book Nook.
- Have fun creating artworks together in the workshop.

3  
tips



The Keppel Centre for Art Education is made possible with the support of Keppel Corporation.



# KIDS' PROGRAMMES & ACTIVITIES

Enjoy family programmes specially designed in collaboration with artists and art practitioners and conducted by experienced artists and museum facilitators to develop a sense of curiosity, imagination and appreciation of art in children.

To receive the latest programme information, visit [nationalgallery.sg/gallerykids](http://nationalgallery.sg/gallerykids).

## FAMILY PROGRAMMES

### 3+ YEARS DROP-IN ACTIVITY

Daily | 10am–7pm | City Hall Wing, Level 1, Keppel Centre for Art Education | Free

Get creative! Experiment with different media in the Keppel Workshops to explore themes inspired by our artworks



### 4+ YEARS STORIES IN ART

Every 2<sup>nd</sup> Sat & Sun of the month | 2.30–3.15pm, 3.30–4.15pm | City Hall Wing, Level 1, Keppel Centre for Art Education | Free, registration required\*

Listen as our storyteller paints a picture worth a thousand words and tells the stories inspired by the artworks found in our Gallery. Why not join in the fun with a song or rhyme?



### 5+ YEARS FAMILY ART TOURS

Every 1<sup>st</sup> Sat & Sun of the month | 2.30–3.20pm, 3.30–4.20pm | City Hall Wing, Level 1, Keppel Centre for Art Education | Free, registration required\*

Learn about different artworks and enjoy engaging conversations with your family as our facilitator brings you on a tour to discuss art and themes relevant to life today.



### 5+ YEARS FAMILY ART WORKSHOPS

Timing TBC | City Hall Wing, Level 1, Keppel Centre for Art Education | Free, registration required\*

Our Family Art Workshops introduce families with children to themes, media and art elements found in the Gallery's exhibitions. Develop a sense of curiosity and explore freely while creating art together with your family!



\*Register for our programmes at the entrance of Keppel Centre for Art Education on the day of the programme.

## OTHER KIDS' ACTIVITIES

### GALLERYKIDS! WEBSITE

Online, [gallerykids.sg](http://gallerykids.sg)



Watch a storytelling session or create an artwork inspired by our art tutorials—there is always something for your children to explore at *GalleryKids!* Don't forget to join us as a member to receive new programme updates.



## SCHOOL PROGRAMMES



Nanyang Academy of Fine Arts students' performance in response to the second Ng Teng Fong Rooftop Garden Commission, untitled 2018 (*the infinite dimensions of smallness*) by Rirkrit Tiravanija, in 2018.

Our school programmes support teaching, learning and research in art and museum education. Resources such as Click and Play Packs are available for teachers who wish to engage students in hybrid learning with our artwork collection.

### Museum-based Learning Tours

Weekdays | 60 min | Between 10am–4pm | Ages 5–12 | Free, registration required

Facilitated by museum educators, guided tours where students can learn more about the Gallery's Collection through active discussions are now available.

Register via online portal  
BookMuseums@SG at  
[bookmuseums.nhb.gov.sg](http://bookmuseums.nhb.gov.sg).

### Studio Workshop—What is a Portrait?

Weekdays | 90 min | Various timings | Ages 5–6 | \$20 per participant

What is a portrait? Why do artists make them? How can portraits help us learn more about ourselves? Enhance students' observation skills and self-expression with a guided tour of the permanent galleries, followed by a portrait sketching activity. Through lively discussion, students will gain confidence in looking at, interpreting and responding to different artworks.

Register via online portal  
BookMuseums@SG at  
[bookmuseums.nhb.gov.sg](http://bookmuseums.nhb.gov.sg).

## SHOPPING & DINING

For the latest updates on our Shopping & Dining outlets, please visit [nationalgallery.sg/see-do/shopping-and-dining](http://nationalgallery.sg/see-do/shopping-and-dining).

Gallery Insiders get up to 20% off selected outlets. Find out more on page 49.



### THE GALLERY STORE BY ABRY

City Hall Wing, Level 1 | Daily 10am–7pm

The Gallery Store by Abry offers thoughtful and innovative museum and art-related merchandise and publications. It is operated by Abry Pte Ltd, a homegrown award-winning distributor of luxury and lifestyle brands.



### ART DI DANIELE SPERINDIO

City Hall Wing, Level 6 | Tel: 6866 1977 |

Tue–Sun noon–2pm, 6–10pm, Alfresco Bar 5pm–midnight

Michelin-starred Art di Daniele Sperindio, a neo-Italian rooftop dining destination, presents a progressive Italian fine dining experience with conversational cuisine & engaging encounters. Art Cocktail & Dessert Bar showcases elegant cocktails and a decadent array of snacks and desserts.



### COURTYARD CAFÉ & LOUNGE

Supreme Court Wing, Level 1 | Tel: 6384 1874 |

Daily (Café) 10am–7pm | Thu–Fri (Lounge) 5–10.30pm

Relax in a tranquil ambience with soothing jazz at Courtyard Café & Lounge, which is nestled in a cosy corner of the Gallery. Specialising in Straits Asian delights and Asian fusion tapas, dig in to authentic and modern interpretations of local dishes including a selection of traditional kuehs, cakes, toast and beverages.



### GEMMA

City Hall Wing, Level 5 | Tel: 8787 0977 | Tue–Sun noon–2.30pm, 6–11pm

GEMMA, led by chef-owner Daniele Sperindio, is a contemporary buzzy social dining destination. With its trendy and festive atmosphere, GEMMA's cuisine is a modern but approachable reinterpretation of perennial Italian favourites, which celebrates life's greatest pleasures through food and drinks.



### HACHI RESTAURANT

Supreme Court Wing, Level 1 | Tel: 6734 9622 |

Mon–Sat noon–2.30pm, 6–11pm

Hachi Restaurant continues its 20-year tradition of Japanese seasonal *omakase* dining with its new flagship at the Gallery. Expect new creations and techniques that showcase the best ingredients from the land and seas of Japan.

### NATIONAL KITCHEN BY VIOLET OON SINGAPORE

City Hall Wing, Level 2 | Tel: 9834 9935 |

Daily noon–3pm, 6–10.30pm | Fri–Sun, public holidays (High Tea) 3–5pm

Helmed by local celebrity chef Violet Oon, National Kitchen serves perennial favourites that reflect Singapore's rich culinary heritage.



### ODETTE

Supreme Court Wing, Level 1 | Tel: 6385 0498 |

Tue–Sat noon–1.15pm (last seating), 6.30–8.15pm (last seating)

Closed on Sun, Mon and public holidays

This modern French restaurant reflects chef-owner Julien Royer's respect for seasonality, terroir and the finest artisanal produce. Using classic French techniques, Royer presents the world's finest seasonal ingredients in their purest form and flavour.



### SMOKE & MIRRORS

City Hall Wing, Level 6 | Tel: 9380 6313 |

Mon–Wed 6pm–midnight | Thu–Sat 6pm–1am | Sun 5pm–midnight

Enjoy magnificent panoramic views of the Padang and Marina Bay while savouring a drink from a meticulously curated menu that includes signature cocktails, wines and craft spirits.



### THE GREAT MISCHIEF

City Hall Wing, Level 1 | Tel: 8721 3150 | Daily 10am–10pm

Fall into a movie set reminiscent of Wes Anderson's films at The Great Mischief—a family-friendly spot that offers hearty brunch and lunch options. Come nightfall, the restaurant evokes a sense of Catalan romanticism with a sexy selection of tapas and paella.



### THE PUBLIC EIGHT

Supreme Court Wing, Level 1 | Tel: 6242 5590 | Thu–Sat 6pm–midnight

This bar-cellar by Hachi Restaurant offers a selection of Japanese whisky and spirits, from Highball cocktails to fresh beer on tap, complemented by modern Japanese food.



### YÀN

City Hall Wing, Level 5 | Tel: 6384 5585 |

Daily 11.30am–2.30pm, 6–10pm

Yàn offers diners the best in Cantonese cuisine. Their sophisticated and innovative signature dishes promise to tantalise your taste buds with diverse ingredients and familiar flavours.





# GALLERY PUBLICATIONS

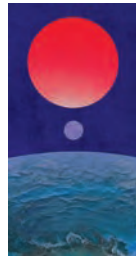
## LIU KUO-SUNG: EXPERIMENTATION AS METHOD

刘国松: 实验悟道

Paperback | approx. 296 pages | \$50 (excluding GST) | English and Chinese | ISBN: 978-981-18-5568-9

With a career spanning more than 70 years, Liu Kuo-sung is a pioneering figure in modern Chinese ink. He has forged new ways of thinking about the legacy of Chinese painting through his non-traditional brush methods and experiments with the materiality of ink and paper. This exhibition catalogue features full-colour reproductions, newly commissioned essays and rare archival materials.

Liu Kuo-sung. *The Composition of Distance* no. 15. 1971. Ink and colour on paper, 111.5 × 57.5 cm. Gift of The Liu Kuo-sung Foundation.



## LIVING PICTURES: PHOTOGRAPHY IN SOUTHEAST ASIA

Paperback | 384 pages | \$50 (excluding GST) | ISBN: 978-981-18-4044-9

This richly illustrated catalogue examines the power of photography and its mobilisation within systems of knowledge and representation across Southeast Asian societies. Rather than just thinking about what photographs show, *Living Pictures* explores what photographs do, acknowledging that photographs have lives—they move and act—and affect the world around them. This catalogue accompanies the world's first-ever survey of the medium's histories across Southeast Asia, from its earliest beginnings in the 19<sup>th</sup> century until its diverse contemporary manifestations, and features essays, interviews, comprehensive image plates and new research by leading international scholars.



## ELEMENTS OF ART WITH ANIMALS: BIRD AND MONKEY'S ART DAY BY THE SEA

Written by Dinaz Cassim | Paperback | approx. 36 pages | \$18 (excluding GST) | ISBN: 978-981-18-4914-5

Trace the sweeping lines of a flapping sail and follow the streamlined shapes of boats in the sea—how do artists use lines and shapes to convey movement and moods? Join Bird and Monkey, your feathered and furry friends, as they leap into, jump out of and whirl around different Southeast Asian artworks. Learn how artists command elements of art to create masterpieces on this fantastical journey into the heart of art. The Elements of Art with Animals series introduces young art lovers to the rudiments of art, which are essential in creating and analysing all works of art.

Yeo Hoe Koon. *Sailing*. Gouache on paper, 52 × 62 cm. Gift of Mandarin Art Galleries Pte Ltd.



## I AM AN ARTIST (HE SAID)

National Gallery Singapore Art Writing | Paperback | 481 pages | \$35 (excluding GST) | ISBN: 978-981-18-2396-1

"To be an artist is ... just like shit in a clogged toilet, stubborn shit that can't decide whether it wants to be flushed or to stick around," writes acclaimed artist Araya Rasdjarmrearnsook. Composed as an irreverent dialogue between masculine and feminine narrators, this book of essays is an uncategorisable fusion of art criticism, feminist theory, art pedagogy, gossip and autofiction. It is also an invaluable insider account of Southeast Asia's contemporary artists being catapulted into international circuits since the 1990s. Araya's provocative prose is lyrically translated from Thai for the first time by Kong Rithee, one of Thailand's most influential cultural critics. National Gallery Singapore's Art Writing is a new, peer-reviewed imprint celebrating the diverse voices and genres of writing that create the discourse of art in Southeast Asia.



## THE MODERN IN SOUTHEAST ASIAN ART: A READER

Paperback | 2 volumes | \$85 (excluding GST) | ISBN: 978-981-14-0664-5

Who spoke of the modern in Southeast Asia? When and where was the modern written? How was it written? How was it received? This collection brings together close to 300 texts that were originally published between the late 19<sup>th</sup> to late 20<sup>th</sup> centuries, produced chiefly in various locations in the region, selected by a group of scholars as responses to questions such as these. The texts were written by artists, critics, historians and curators in 13 languages, many of which had never before been translated into the English language. Years in the making, this publication is the first to present such breadth and depth of art writing in the region of Southeast Asia, and will be a valuable resource to students, teachers and scholars of Southeast Asian studies and art history.



## WORDS ON ART: THE WORLD ANEW

Written by Koh Buck Song | Paperback | approx. 80 pages | \$22 (excluding GST) | ISBN: 978-981-18-4045-6

Responding to the National Gallery Singapore's exhibitions, writer Koh Buck Song sees the world anew through the Covid-19 pandemic, and reflects on life and the human spirit. The collection includes a selection of *haiga* (a 16<sup>th</sup>-century style of Japanese painting often accompanied by a haiku), in which he blends word and image to elegant effect.

## PERSPECTIVES

Our online weekly magazine for views, conversations, research and behind-the-scenes insights. Visit [nationalgallery.sg/magazine](https://nationalgallery.sg/magazine).

## ANOTHER INITIAL IMPETUS

Our new mobile-friendly zine series explores the legacies of the Alpha Gallery in Singapore, an arbiter of its time. Visit [nationalgallery.sg/zines](https://nationalgallery.sg/zines).

## FAMILIAR OTHERS:

EMIRIA SUNASSA, EDUARDO MASFERRÉ AND YEH CHI WEI, 1940s–1970s

This digital exhibition publication is the second in a series covering our new project space, Dalam Southeast Asia (see p. 22).

# TICKETING INFORMATION

## FREE AND EASY ART ENCOUNTERS FOR ALL

Entry is free for everyone at:

- Level B1, Basement Concourse  
(The Ngee Ann Kongsi and Koh Seow Chuan Galleries)
- Level 1, Keppel Centre for Art Education
- Level 3, Chief Justice's Chamber & Office
- Level 4, ArchiGallery
- Level 5, Ng Teng Fong Roof Garden Gallery
- Level 6, Padang and Coleman Deck
- Gallery Children's Biennale, multiple locations



Purchase your **Gallery Passes** online or on-site from our Self-Service Kiosks.



SCAN TO PURCHASE PASSES

GALLERY PASS TYPE	STANDARD	LOCAL*	CONCESSION
<b>General Admission</b> + Free Guided Tours	<b>\$20</b>	<b>FREE</b>	<b>\$5 OFF</b>

### CONCESSION COVERS:

- Children aged 7–12
- Seniors aged 60 and above
- Overseas students and teachers<sup>^</sup>

### FREE ADMISSION FOR:

- Gallery Insiders
- Children aged 6 and below
- Local/locally-based students and teachers<sup>^</sup>
- Full-time National Servicemen (NSFs) excluding foreign personnel
- Persons with disabilities (PWD) and their caregivers

### GENERAL ADMISSION PASS ADMITS ONE TO THESE EXHIBITIONS:

- *See Me, See You: Early Video Installation of Southeast Asia*
- *Liu Kuo-sung: Experimentation as Method*
- *Living Pictures: Photography in Southeast Asia*
- *Siapa Nama Kamu? Art in Singapore Since the 19<sup>th</sup> Century*
- *Between Declarations and Dreams: Art of Southeast Asia Since the 19<sup>th</sup> Century*



\*Rates for locals apply to Singaporeans and PRs.

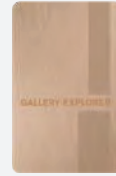
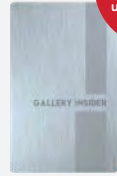
<sup>^</sup>From qualifying institutions only.

Valid identification is required. For latest promotions and ticket prices, please visit [nationalgallery.sg](http://nationalgallery.sg).

## GALLERY MEMBERSHIP

Unlock the world of art with National Gallery Singapore membership. Enjoy admission privileges, free parking and discounts on dining and shopping. Join a community of art enthusiasts and elevate your art experience.

### MEMBERSHIP TYPES

		
	<b>EXPLORER</b>	<b>INSIDER</b>
	<b>FREE</b>	Standard: \$35 / \$30 <sup>^</sup> Local*: \$20 / \$15 <sup>^</sup>
Free parking daily	1-hour	2-hour
Stay updated on seasonal offers	✓	✓
Unlimited free access to all exhibitions		✓
Pre-opening and After Hours exhibition viewing		✓
Exclusive festival film screenings and workshops		✓
Members-only concierge for enquiries		✓
Shopping and dining discounts		Up to 20%
Earn points and redeem for rewards		✓

\$200 worth of vouchers upon sign-up!

For more information, please scan the QR code or email [membership@nationalgallery.sg](mailto:membership@nationalgallery.sg).



SCAN TO SIGN UP

\*Rate for locals apply to Singaporean and PR.

<sup>^</sup>Concessions are available for students, children aged 7–12 and seniors aged 60 and above.

Offers are accurate at time of print.



# GENERAL INFORMATION

For the latest updates on our Venues and Spaces, please visit [nationalgallery.sg/venue-rental](https://nationalgallery.sg/venue-rental).

## VENUES FOR RENT

Blending rich history with exciting modernity, the Gallery's historical neoclassical architecture and unique spaces are ideal for hosting a variety of events, from conferences to product launches.

### SUPREME COURT TERRACE



Built around the former Supreme Court's Rotunda dome, old and new architecture merge perfectly in this captivating space. The terrace offers a sophisticated setting for events such as product launches, private receptions and seated dinners.

### ROOFTOP STUDIOS



Located on the Gallery's tranquil rooftop, these versatile and air-conditioned rooms are designed to cater to a variety of events—from meetings to training and breakout sessions, or even small workshops.



SCAN HERE TO  
BROWSE ALL VENUES

### THE Ngee Ann Kongsi Auditorium and Foyer



Nestled in the basement, this space features theatre seating with state-of-the-art audiovisual equipment. An ideal venue for talks, seminars, screenings and recitals with a spacious foyer to host a cocktail reception.

### PADANG DECK



Located on the rooftop, this open-air space offers spectacular panoramic views of Singapore's skyline.

## OPENING HOURS

Daily 10am–7pm

General ticket sales end 30 minutes before closing time.

## GETTING TO THE GALLERY

**BY BUS** (Stops at Parliament Place)  
195, 961

**BY MRT**  
5-minute walk from City Hall MRT station via the Art Connector  
10-minute walk from Clarke Quay and Raffles Place MRT stations

**BY TAXI**  
The nearest taxi stands are located at Coleman Street entrance of the Gallery and The Adelphi.

**BY CAR**  
Drop-off point for cars is located at Coleman Street entrance.

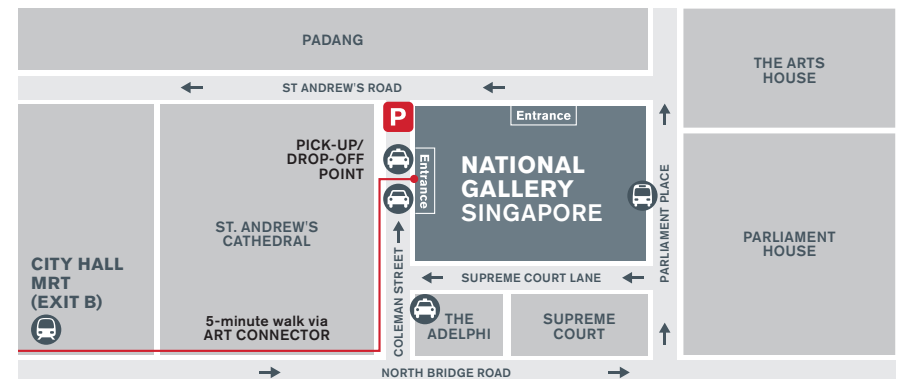
**P** There are 200 parking lots on Levels B2 and B3. Entrance to the carpark is accessible via St Andrew's Road and Coleman Street.

### Gallery Parking Rates

Daily, including Public Holidays  
7am–6pm \$1.30 per half hour  
6pm–1am \$3.20 per entry  
\$1.00 per entry for motorcycles

### Free Parking for Members

**Explorer:** 1-hour free parking  
**Insider:** 2-hour free parking  
Go to "My Rewards" in the members' portal for more details.  
Not a member yet?  
Sign up as a member for free!  
Find out more on page 45.

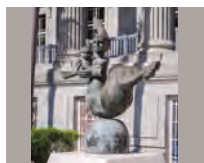


**ADDRESS:** 1 St Andrew's Road #01-01 Singapore 178957

**ENQUIRIES:** 6271 7000, [info@nationalgallery.sg](mailto:info@nationalgallery.sg)

# SUPPORT THE GALLERY

The Gallery offers opportunities for you to enhance and cultivate your love for the arts. Your support helps us to build a world-class collection, pioneer original research and develop our public programmes to bring art to a wider audience.



## ARTWORK DONATIONS

Artwork donations are crucial to the Gallery's mission to present Singapore and Southeast Asian modern art. All proposed donations will be carefully considered and endorsed by our Acquisition Committee.

Ng Eng Teng. *Mother and Child*. 1996. Bronze, 350 x 310 x 150 cm.  
Gift of the family of the late Dr Ng Eng Teng.



## ART ADOPTION AND ACQUISITION PROGRAMME

Adopt artworks that are on display in our Singapore and Southeast Asian long-term exhibition galleries. We also welcome monetary donations to our acquisition fund. Donations go towards acquiring new artworks that strengthen our collection.

Raden Saleh. *Wounded Lion*. c. 1838. Oil on canvas, 88 x 108.5 cm.



## [ADOPT NOW]

From just \$50, you can "own" an artwork together with a group of like-minded art enthusiasts and build our National Collection for future generations. In addition to being acknowledged online for your contributions in perpetuity, you will also receive an artwork digital badge for every contribution made.

Chua Mia Tee. *Epic Poem of Malaya*. 1955. Oil on canvas, 107 x 125.5 cm.  
This work has been collectively adopted by [Adopt Now] supporters. © Chua Mia Tee and family.



## PATRONS PROGRAMME

Become part of a community of like-minded individuals who are looking for sustained engagement with the arts and want to support the Gallery.

Our Patrons enjoy a year-long calendar of exclusive tours, artist dinners, opening receptions and behind-the-scenes access.



## EXHIBITION AND PROGRAMME PARTNERSHIPS

Our exhibition and programme partners make art more accessible to the community while also increasing their brand awareness. Partnership packages can be tailored to your needs and include privileges like private viewings that are perfect for engaging clients and staff.

To find out more, please visit [nationalgallery.sg/join-give/support-the-gallery](https://nationalgallery.sg/join-give/support-the-gallery) or scan the QR code to contribute to [donate.nationalgallery.sg](https://donate.nationalgallery.sg)



All gifts made are eligible for tax deductions in accordance with IRAS guidelines.

National Gallery Singapore would like to thank our corporate partners for their generous support.

Development Partner



Founding Partners



Partner



Innovation Partner



Supported by



For details on partnership opportunities, please visit [nationalgallery.sg/join-give/support-the-gallery](https://nationalgallery.sg/join-give/support-the-gallery) or contact us at [supportus@nationalgallery.sg](mailto:supportus@nationalgallery.sg)





[nationalgallerysg](#)



[nationalgallerysingapore](#)



[natgallerysg](#)



[nationalgallerysg](#)



新加坡国家美术馆

**[nationalgallery.sg](#)**

6271 7000, [info@nationalgallery.sg](mailto:info@nationalgallery.sg)

1 St Andrew's Road Singapore 178957