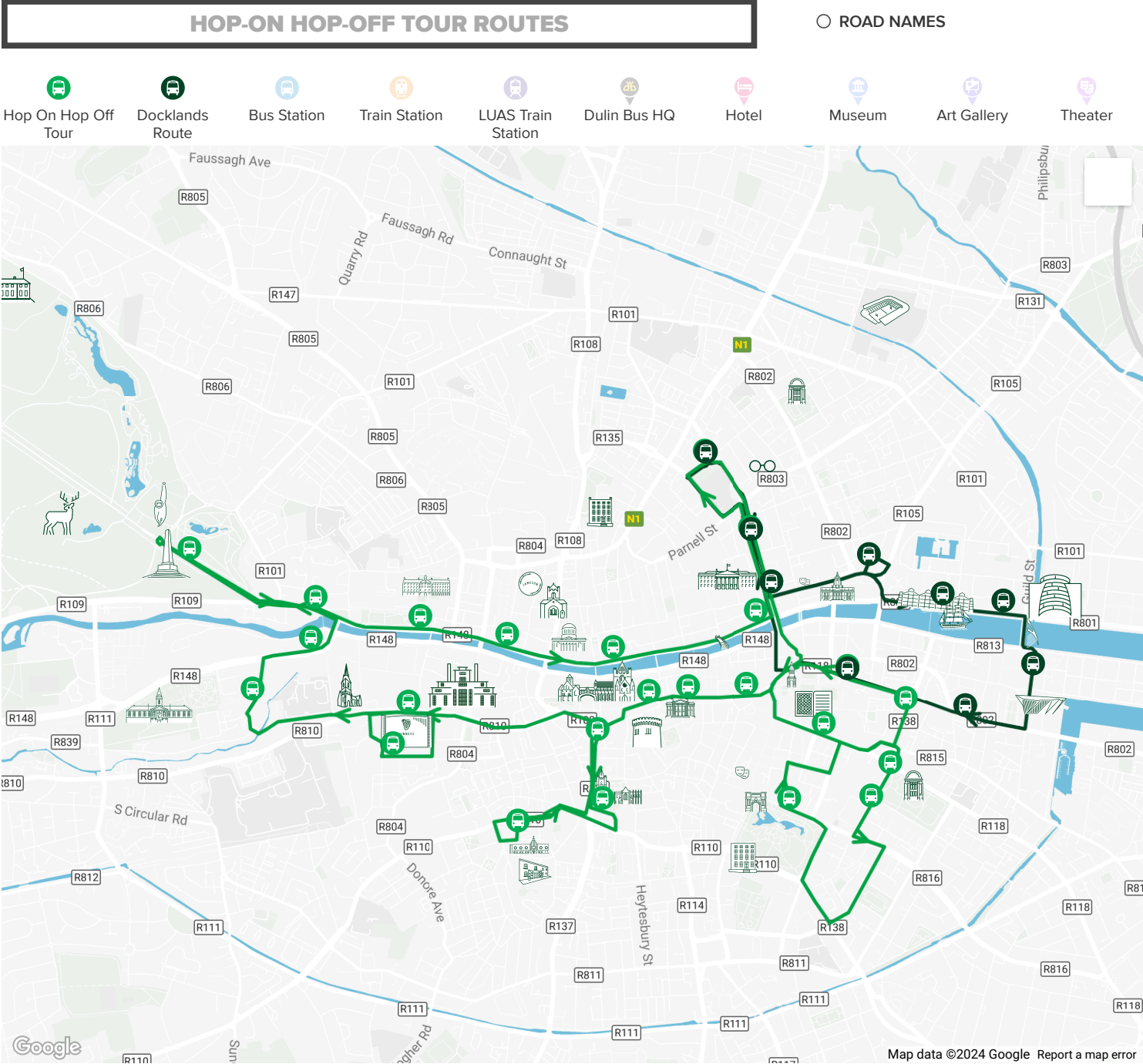


OUR TOURS INTERACTIVE MAP



BUS HEAD OFFICE

1) O’Connell St. / Dublin Bus Head Office
ATTRactions: DoDublin Info, The Spire

O’CONNELL ST. / ABBEY ST.

3) O’Connell St. / Abbey St.
ATTRactions: GPO, Daniel O’Connell Statue

MERRION SQUARE WEST

5) Merrion Square West
ATTRactions: National Gallery of Ireland

ST. STEPHEN’S GREEN

7) St. Stephen’s Green
ATTRactions: St. Stephen’s Green, Little Museum, MOLI

PEARSE STREET

9) Pearse Street
ACCOMMODATION: Trinity City Hotel
ATTRactions: Opposite Trinity City Hotel

DAME STREET

11) Dame Street
ATTRactions: Temple Bar, City Hall

CHRIST CHURCH PLACE

13) Christ Church Place
ATTRactions: Christ Church Cathedral, Dublinia

NEWMARKET SQUARE

15) Newmarket Square
ATTRactions: Teeling Whiskey Distillery

JAMES’S STREET

17) James’s Street
ATTRactions: Roe & Co. Distillery, Pearse Lyons Distillery

SAINT JOHN’S ROAD

19) Saint John’s Road
ATTRactions: Heuston Station

PARKGATE STREET

21) Parkgate Street
ATTRactions: Ryan’s Victorian Bar

2) Parnell Sq. North
ATTRactions: Dublin City Gallery, Writers Museum

NASSAU ST.

4) Nassau St.
ATTRactions: National Library of Ireland, Archaeology Museum, Trinity College

MERRION STREET UPPER

6) Merrion Street Upper
ATTRactions: Leinster House, Natural History Museum

WESTLAND ROW

8) Westland Row
ATTRactions: Pearse Station &, Oscar Wilde Birth Place

COLLEGE GREEN / TRINITY COLLEGE

10) College Green / Trinity College
ATTRactions: Book of Kells, Irish Whiskey Museum

CORK HILL

12) Cork Hill
ATTRactions: Dublin Castle, Chester Beatty Library

SAINT PATRICK’S CLOSE

14) Saint Patrick’s Close
ATTRactions: St. Patrick’s Cathedral, Marsh’s Library,

SAINT JAMES’ GATE

16) Saint James’ Gate
ATTRactions: Guinness Storehouse

ROYAL HOSPITAL

18) Royal Hospital
ATTRactions: Museum of Modern Art, , Kilmainham Gaol

PHOENIX PARK

20) Phoenix Park
ATTRactions: Dublin Zoo, Áras an Uachtaráin

SARSFIELD QUAY

22) Sarsfield Quay
ATTRactions: Collins Barracks Museum

O'Shea's Merchant, St. Michan's Church

BACHELOR'S WALK

25) Bachelor's Walk

ACCOMMODATION: Arlington Hotel

ATTRACTIONS: The National Wax
Museum

PARNELL SQUARE

Stop A

ACCOMMODATION: Maldron Parnell

Square, Castle Hotel, Belvedere Hotel,
Hotel 7, Cassidy's, Hotel St. George

ATTRACTIONS: James Joyce Museum,
Dublin City Gallery, 14 Henrietta Street

BUSÁRAS

Stop C

ACCOMMODATION: Beresford Hotel,

Jacobs Inn Hostel, The Address Connolly

ATTRACTIONS: Custom House Museum,
Abbey Theatre

CONNECTIONS:

SPENCER HOTEL

Stop E

ACCOMMODATION: Spencer Hotel,

Samuel Hotel, Gibson Hotel, Mayson Hotel

ATTRACTIONS: Convention Centre,
Samuel Beckett Bridge, Beckett Locke
Hotel

PEARSE STREET (LIBRARY)

Stop G

ACCOMMODATION: Maldron Pearse

Street

ATTRACTIONS: Windmill Lane Studios,
Pearse Library

O'CONNELL STREET

Stop J

ACCOMMODATION: Motel One, Clink

Hostel, Gresham Rui Plaza, Academy

Plaza, Holiday Inn O'Connell St, Point A,
Leonardo's

ATTRACTIONS: DoDublin Info

CONNECTIONS:

O'CONNELL ST/ABBEY ST.
JUNCTION

Stop B

ACCOMMODATION: Motel One, Clink

Hostel, Gresham Rui Plaza, Academy

Plaza, Holiday Inn O'Connell St, Point A,
Leonardo's

ATTRACTIONS: GPO Museum, Spire &
Daniel O'Connell Statue, DoDublin Tours

CONNECTIONS:

CUSTOM HOUSE QUAY

Stop D

ACCOMMODATION: Hilton Garden Inn,

ATTRACTIONS: EPIC Museum, Famine

Memorial, Jeanie Johnston

CARDIFF LANE

Stop F

ACCOMMODATION: Clayton Hotel, The

Ferryman, The Marker

ATTRACTIONS: Dublin Bay Cruises,
Grand Canal Square, Bórd Gáis Energy
Theatre

PEARSE STREET

Stop H

ACCOMMODATION: Trinity City Hotel,

Travel Lodge

ATTRACTIONS: Trinity College