



DREAM CRUISES

Cruise Guide

GENTING DREAM



Tips for smooth sailing from check-in to disembarkation

For cruises departing from Malaysia & Singapore

Welcome aboard our flagship, Genting Dream.

Feel the sea breeze and smell the ocean as you step aboard Genting Dream, your ticket to an unforgettable experience.

Whether you're down for entertainment and nightlife, a foodie in search of terrific meals, or a fitness and spa enthusiast who needs a break from the mundane, we have the perfect experience lined up for you.





Entertainment

Aboard Genting Dream, we bring endless fun and excitement for the whole family, from world-class entertainment and thrilling activities to vibrant nightlife.

- Arcade, Deck 16 FWD • Glow Bowl, Deck 17 AFT • Karaoke, Deck 6 FWD
- Little Dreamers Club, Deck 16 MID • Main Pool, Deck 16 MID
- Ropes Course & Zipline, Deck 17 & 18 AFT • Zodiac Theatre, Deck 7 FWD
- Zouk & Zouk Beach Club, Deck 17 AFT



Dining

A cruise is only complete with exciting dining experiences, offering international flavors, delicious meals with loved ones, and refreshing drinks in a unique atmosphere.

- Bar 360, Deck 6 MID • Bar City, Deck 8 MID • Bistro, Deck 8 FWD
- Dream Dining Room Lower, Deck 7 AFT* • Dream Dining Room Upper, Deck 8 AFT* • Function 8 @ Deck 5, Deck 5 FWD* • Gelateria, Deck 8 AFT
- Hot Pot, Deck 8 AFT • Lobby Cafe, Deck 6 MID • Palm Court, Deck 19 FWD
- Silk Road, Deck 6 FWD • The Lido, Deck 16 AFT* • Umi Uma, Deck 8 AFT

*Inclusive restaurants



Beauty & Wellness

We take pride in our healing traditions through massage and tonics. Whether you're seeking relaxation, fitness, or a refreshed look, we offer everything to help you feel your best.

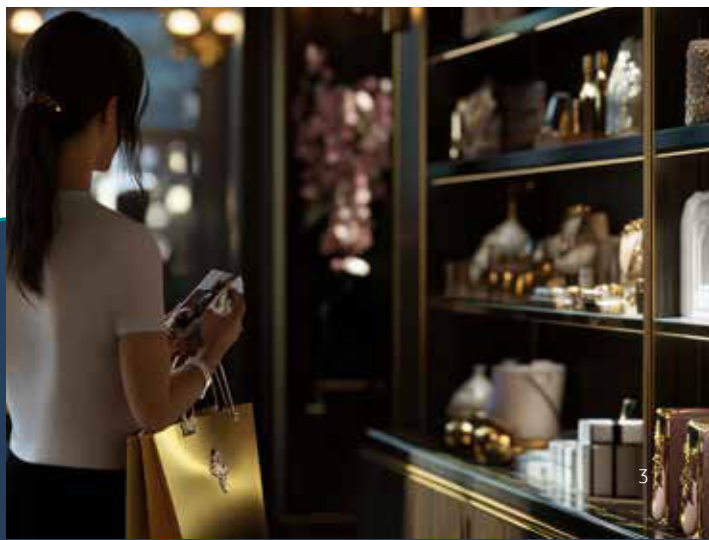
- The Gym, Deck 15 FWD • The Salon, Deck 15 FWD • The Spa, Deck 15 FWD



Retail

Shop and cruise all in one trip on Genting Dream! Discover great finds at our duty-free store, outlet, or pick up exclusive gifts from our gift shop.

- Art Gallery, Deck 8, FWD & AFT • Souvenir Mart, Deck 6 MID
- The Boutiques, Deck 7 AFT



THE 皇宮 PALACE

The Palace is our all-suite concept within Dream Cruises for anyone who chooses to experience the best of Asian hospitality and exuberant living.

All-Inclusive Privileges

- 1 All-Suite Accommodations
- 2 All-Butler Service
- 3 All-Indulgent Benefits
- 4 All-Encompassing Spaces

Approach our **Reception** to find out how you can upgrade to The Palace.



ON YOUR ARRIVAL

- Access to VIP lounge at terminal
- Priority check-in with butler assistance
- Fast track security clearance
- Priority luggage check-in and check-out with express delivery

IN YOUR SUITE

- 24-hour butler concierge service
- Free Standard Wi-Fi package throughout cruise
- Dream Beds and luxurious European linens
- Premium bath amenities
- Capsule Coffee Machine & Tea
- Welcome minibar beverages and snacks
- Welcome fruit plate and delights
- Pressing service
- Fresh flower arrangement in Palace Penthouses & Villas

WHEN YOU DINE

- Exclusive 24-hour access to The Palace Restaurant with complimentary dining, featuring premium delicacies and special menu items.
- Set meal entitlements at designated specialty dining restaurants
- Complimentary healthy meal options in The Palace Restaurant
- Complimentary in-suite dining for Palace Villa guests
- Happy Hour with complimentary drinks such as selected wines, beers and non-alcoholic beverages at selected venues
- Free-flow of chilled juices, Chinese and Japanese teas, and coffee throughout the day at selected venues
- Priority booking for Chef's Table

WHEN YOU EXPLORE

- Priority access to live shows
- Exclusive Kids Programme for children aged 2 to 12

Privileges are subject to change without prior notice.



Before Cruise

PACKING ESSENTIALS



Mandatory online check-in is available and closes 48 hours before departure.



Passport (with at least 6 months validity), Valid Work Permit/ Employment Pass/Long Term Pass/Student Pass/Dependent Pass/Re-entry permit if any and Cruise Ticket



Applicable VISA requirements and Cash (in Singapore Dollars) and Credit Cards



Proper swim attire is required for waterslides and pools. Sneakers or closed-toe shoes are needed for the rock wall and zip line.

DO NOT BRING



Flammable, explosive materials/ Pressurised Vessels



Sharp objects including throwing stars and open razors



Illegal Drugs



Alcohol and E-Cigarettes



Weapons including replicas, imitations and components of firearms, crossbows, blunt weapons and stun devices



Electrical items and heating devices such as iron, cooking appliances, coffee maker, extension cords



Raw food including pastries, eggs, dairy, meats, selected fruits and others



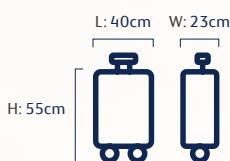
Others such as EPIRBs, laser pointers, remote devices, hoverboards, and anything else that may endanger people onboard

DEPARTURE DAY



Arrive at the terminal at assigned time on Cruise Ticket

Note: Guests are not permitted to consume food at Marina Bay Cruise Centre's waiting area. All food must be consumed prior to the security checkpoint.



For guests departing from Singapore – Luggages beyond above size or more than 9kg are required to be checked in.



Collect Cabin Card

Singapore Terminal Address

Marina Bay Cruise Centre
61 Marina Coastal Dr, Singapore 018947

Port Klang Terminal Address

Pulau Indah, P.O. Box 288, 42009 Pelabuhan
Klang Selangor Darul Ehsan, Malaysia

Melaka ICQS Terminal

Jalan Taman Kota Laksamana 1,
65200 Melaka

During Cruise

WIFI



Dream Cruises Concierge

Connect to Dream Cruises Wi-Fi to get more information for onboard entertainment, programmes, dining, excursion and more.

Wifi Packages (in SGD)

Venue	1 Night	2 Nights	3 Nights	4 Nights
Standard (Full Cruise) - 1 Device	12	24	36	48
Standard (Full Cruise) - 2 Devices	21	42	63	84
Standard (Full Cruise) - 3 Devices	32	64	96	128
Standard (Full Cruise) - 4 Devices	41	82	123	164
Premium (24 Hours) - 1 Device	32	-	-	-
Premium (Full Cruise) - 1 Device	18	36	54	72
Premium (Full Cruise) - 2 Devices	33	66	99	132
Premium (Full Cruise) - 3 Devices	50	100	150	200
Premium (Full Cruise) - 4 Devices	63	126	189	252

Standard: Connect to the Internet at basic speeds **Premium:** Connect to the Internet at prime speeds

Gratuity Fee Scheme (Per Person in SGD)

Cabin Category/No. of Nights	2 Nights	3 Nights	4 Nights
Palace	80	120	160
Balcony & Balcony Deluxe Stateroom	66	99	132
Interior & Oceanview Stateroom	54	81	108

Charges waived for children aged below 2

SAFETY PRACTICES



Keep your Cabin Card with you at all times



If you feel unwell, please proceed to the medical centre



Before Disembark

QUICK PAY - SELF CHECK-OUT

Save your time on queuing up for payments!

Prior to disembarkation, please ensure that all outstanding bills are cleared.

- Check your cabin charges
- Settle your bill with VISA or MASTER instantly or enjoy autopay service



Payment types accepted at Reception, Deck 6 Mid



Disembarkation

Disembark at the assigned time and refer to the Dream Cruises Concierge for more details.

All travellers are required to submit SG Arrival Card through <http://eservicesica.gov.sg> before arriving in Singapore.
This can be done 3 days prior to the date of arrival in Singapore.

Discover a new world of fun and luxury
on the Genting Dream.